

Infant mortality

Public Health Bulletin

2020

Bradford Public Health
Intelligence

Published Nov 2020

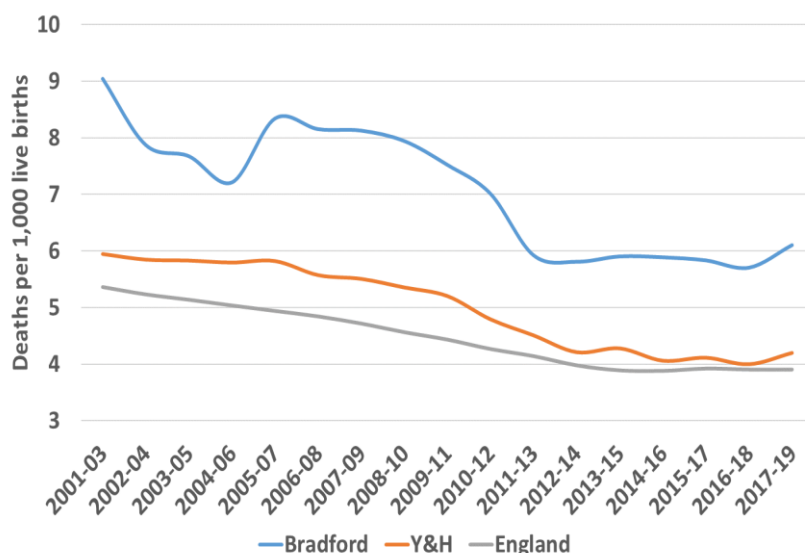


Key Points

- The infant mortality rate in Bradford District increased between 2017-2019 to **6.1 deaths per 1,000 live births**
- There were **135** infant mortalities between 2017-19, **4 more** than in 2016-18
- Infant mortality rates remain **above** both the **national** and **regional** averages
- Bradford District has the **8th highest** infant mortality rate in England
- The gap between Bradford District and the average for England increased in 2017-19
- Bradford District continues to have the **2nd highest** infant mortality rate within the Yorkshire & Humber region

Infant mortality – trend data

Infant mortality in Bradford District, 2001-03 to 2017-19



In 2017-19, the infant mortality rate in Bradford District was **6.1 deaths per 1,000 live births**, an increase from 5.7 deaths in 2016-18

There were **135 infant mortalities** between 2017-19, **4 more** deaths than in 2016-18

The infant mortality rate in Bradford District remains **above** both the regional average (4.5) and England average (3.9)

The gap between Bradford and the England average has widened to 2.2 deaths per 1,000 live births

National rank

When compared to 150 local authorities in England

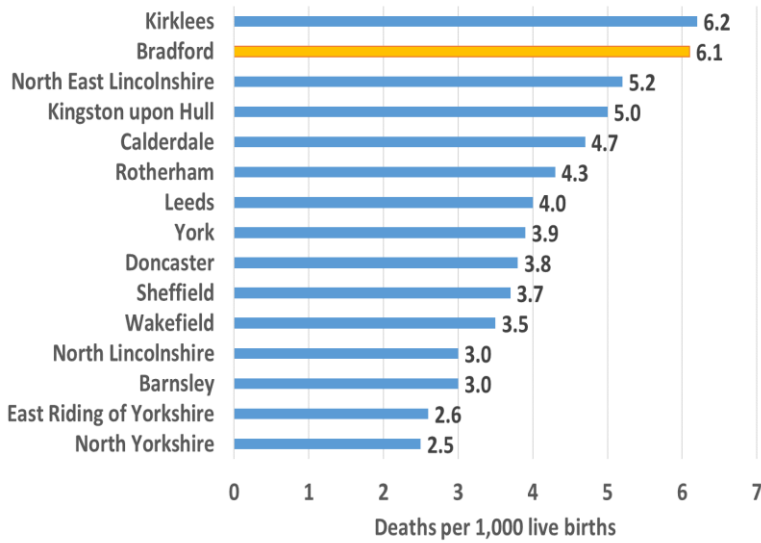
2016-18
Bradford had the **10th** highest infant mortality rate in England

Bradford Districts national rank has **increased**

2017-19
Bradford had the **8th** highest infant mortality rate in England

Yorkshire & the Humber

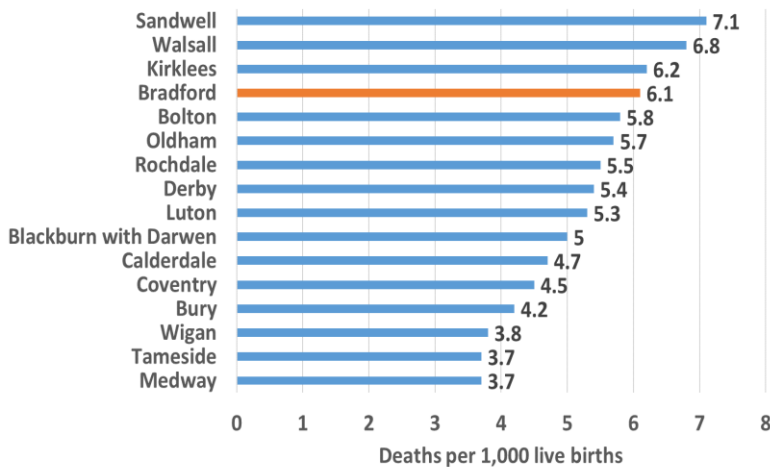
Infant mortality in Yorkshire & Humber, 2017-19



Bradford District has the **2nd highest** infant mortality rate in the region

Statistical neighbours

Infant mortality, 2017-19 - Bradford District and its similar local authorities



Bradford District has the **4rd highest** infant mortality rate when compared to similar local authorities