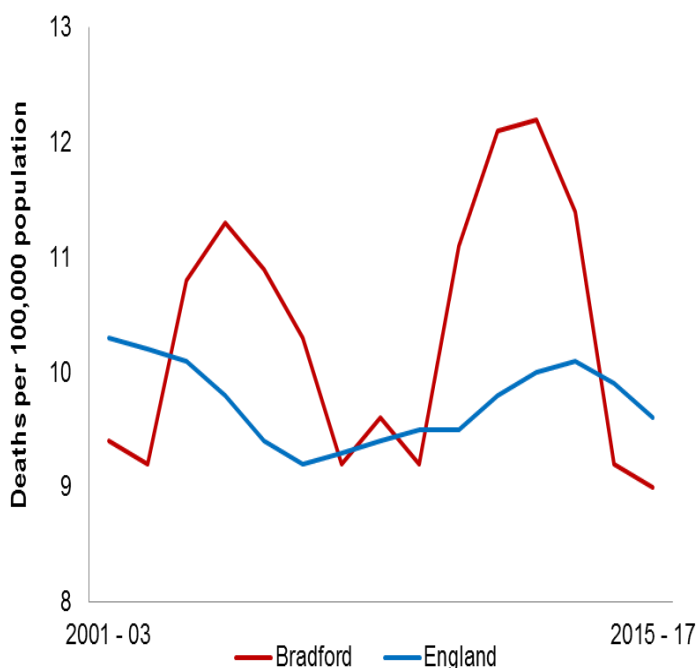


## Suicide Rate in Bradford District

### Trend in Bradford and England from 2001-2003 to 2015-2017

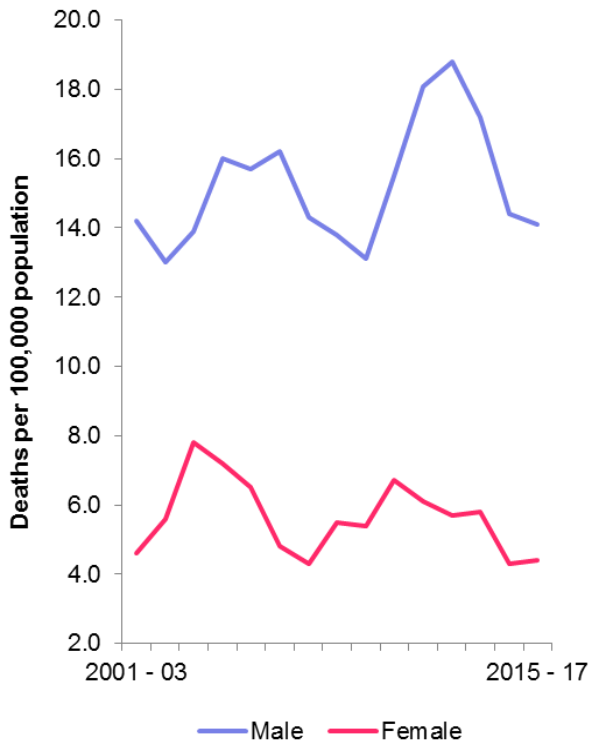


During the period 2001-03 to 2015-17, on average **40 people die every year** in Bradford District due to suicide.

The **suicide rate in Bradford District** has fluctuated over the years. However in recent years (from 2012-14 onwards), the rates **have fallen**. From 2014-16 to 2015-17, suicide rate in the district has been lower than regional and national average.

**In 2015-17**, the **suicide rate** in Bradford District was **9.0 deaths per 100,000 population** which **remains lower than both the regional** (10.4 per 100,000 population) and **national** (9.6 per 100,000 population) **rates**.

## Suicide rates for males and females in Bradford District - 2015/17



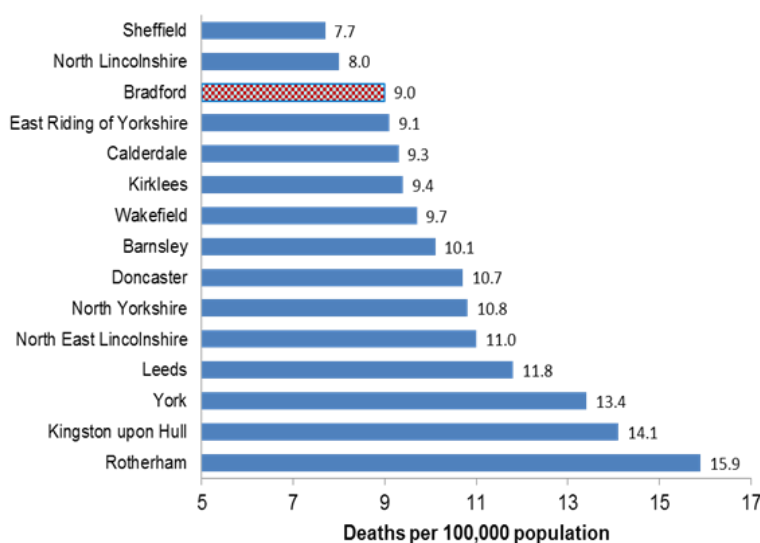
In Bradford District, **suicide rate is higher in males than females**. This disparity is not unique to the district only; it is also reflected nationally and regionally.

In 2015-17, **suicide rate for females** in Bradford District was **4.4 per 100,000 population**. This was a slight increase from the rate in 2014/16 which was 4.3 deaths per 100,000 population.

However for **males** in the district, suicide rate has gradually reduced since 2012-14 from 18.2 deaths per 100,000 population to **14.4 per 100,000 population** in 2015-17.

For both males and females in Bradford District, mortality rate due to suicide is slightly **lower than the national averages**, 14.7 per 100,000 (males) and 4.7 (females).

## Suicide rates for local authorities within Yorkshire and Humber – 2015/17



When compared to other local authorities within Yorkshire and Humber, **Bradford District has the 3rd lowest suicide rate** in the region.

Sheffield has the lowest rate (7.7 per 100,000) while Rotherham has the highest (15.9 per 100,000) suicide rate in the region.