



2021 Census

population, ethnicity, religion and households at ward level

At a glance:

- City ward has the highest population (23,530) a 0.2% increase since the 2011 census
- Wharfedale ward has the lowest population (12,060) a 1.9% increase since 2011
- The largest percentage of people who identify as being of Pakistani origin live in Toller ward (75%)
- The largest percentage of people who identify as White British live in Worth Valley (95.2%)
- Toller ward has the highest percentage of Muslim residents (80.1%)
- Wharfedale ward has the highest percentage of Christian residents (53.2%)
- City ward has the highest percentage of one-person households and Manningham has the highest percentage of households of eight or more people (6.7%)

Introduction

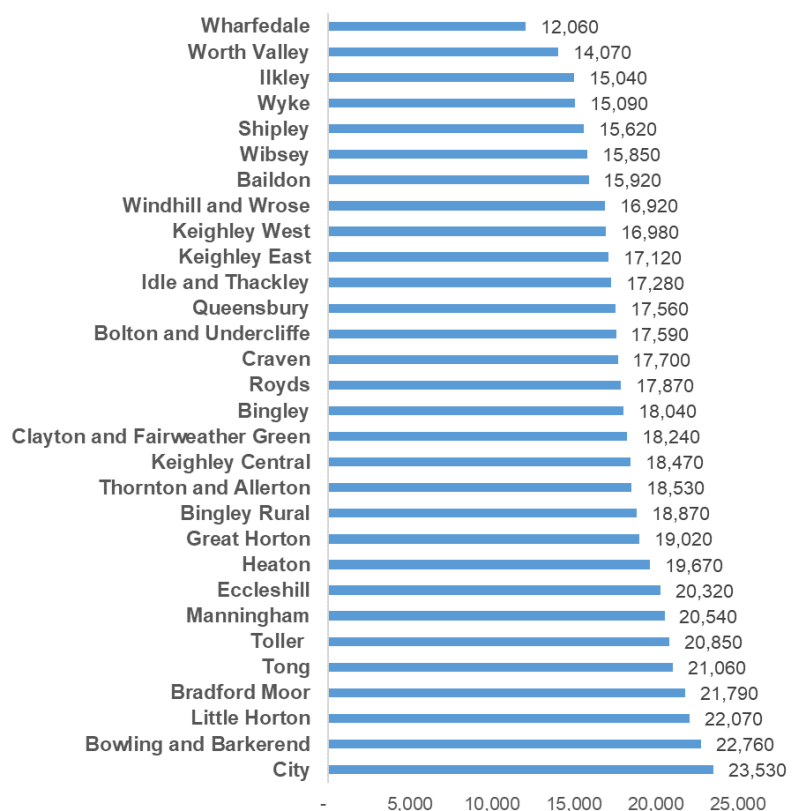
The total census population for Bradford District is 546,400. This is an increase of 4,300 since the mid-2020 population estimates were published in June 2021 and an increase of 23,950 people since the 2011 Census.

Ward population

City ward has the highest population in the District, followed by Bowling and Barkerend and Little Horton wards. Wharfedale has the lowest population, followed by Worth Valley and Ilkley.

Most of Bradford District's wards saw an increase in their population between the 2011 and 2021 censuses – the exceptions being Bingley and Worth Valley which both saw a decrease. Heaton ward saw the highest population increase, followed by Eccleshill and Bowling and Barkerend wards.

2021 Census population at ward level



The Office for National Statistics (ONS) has now published the mid-2021 population estimates. The estimated population for Bradford District is 547,000. This data is only currently available at District-wide level.

Ethnic groups at ward level

The 2021 Census asked people for their ethnic group or background.

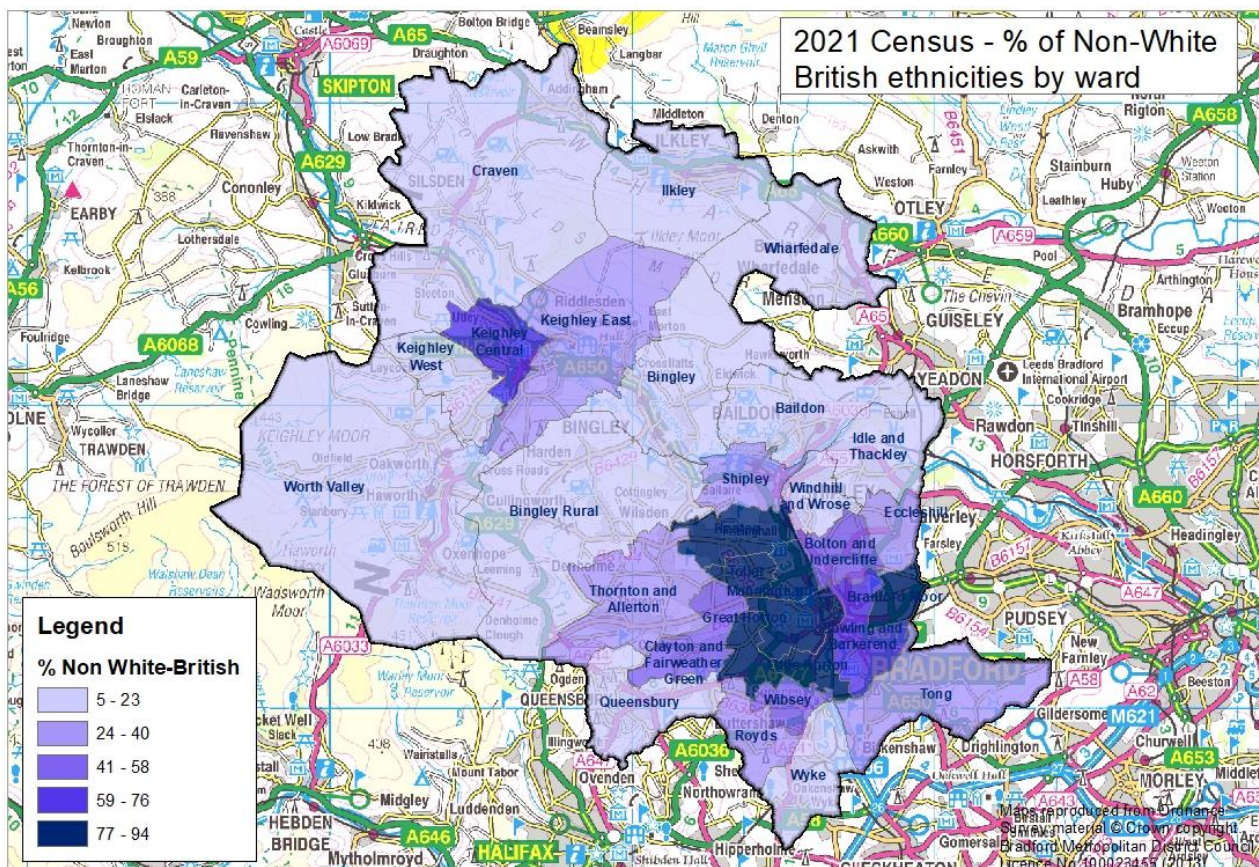
61.1% of the Bradford District population identified as White, 32.1% identified as Asian or Asian British, 2.7% identified as Mixed or Multiple ethnic groups, 2% identified as Black and 2% chose to identify with an other ethnic group.

The census added a new category to this question, Roma and 1,583 of the District's population (0.3%) identified as Roma.

82.7% of residents in Toller ward identify as being of Asian or Asian British origin (the highest percentage in Bradford District) and the lowest percentage of people who identify as White (10.6%). 79.8% of Bradford Moor residents and 79.1% each of residents in Manningham identify as being of Asian or Asian British origin.

Worth Valley has the highest percentage of people who identify as White (97.3%) and the lowest percentage of people who identify as being of Asian or Asian British origin (0.7%). 96.5% of residents in Wharfedale and 96.1% in Craven identified as White.

Great Horton has the highest percentage of people who identify as Roma (1%).



Religion at ward level

The question about Religion in the 2021 Census was voluntary. 33.4% of the District's population identified as Christian, 30.5% identified as Muslim, 0.9% identified as Sikh, 0.9%

identified as Hindu, 28.2% of the population said that they had no religion and 5.5% chose not to provide an answer.

Toller ward has the highest percentage of residents who identify as Muslim (80.1%), followed by Bradford Moor (77.6%) and Manningham (77.4%).

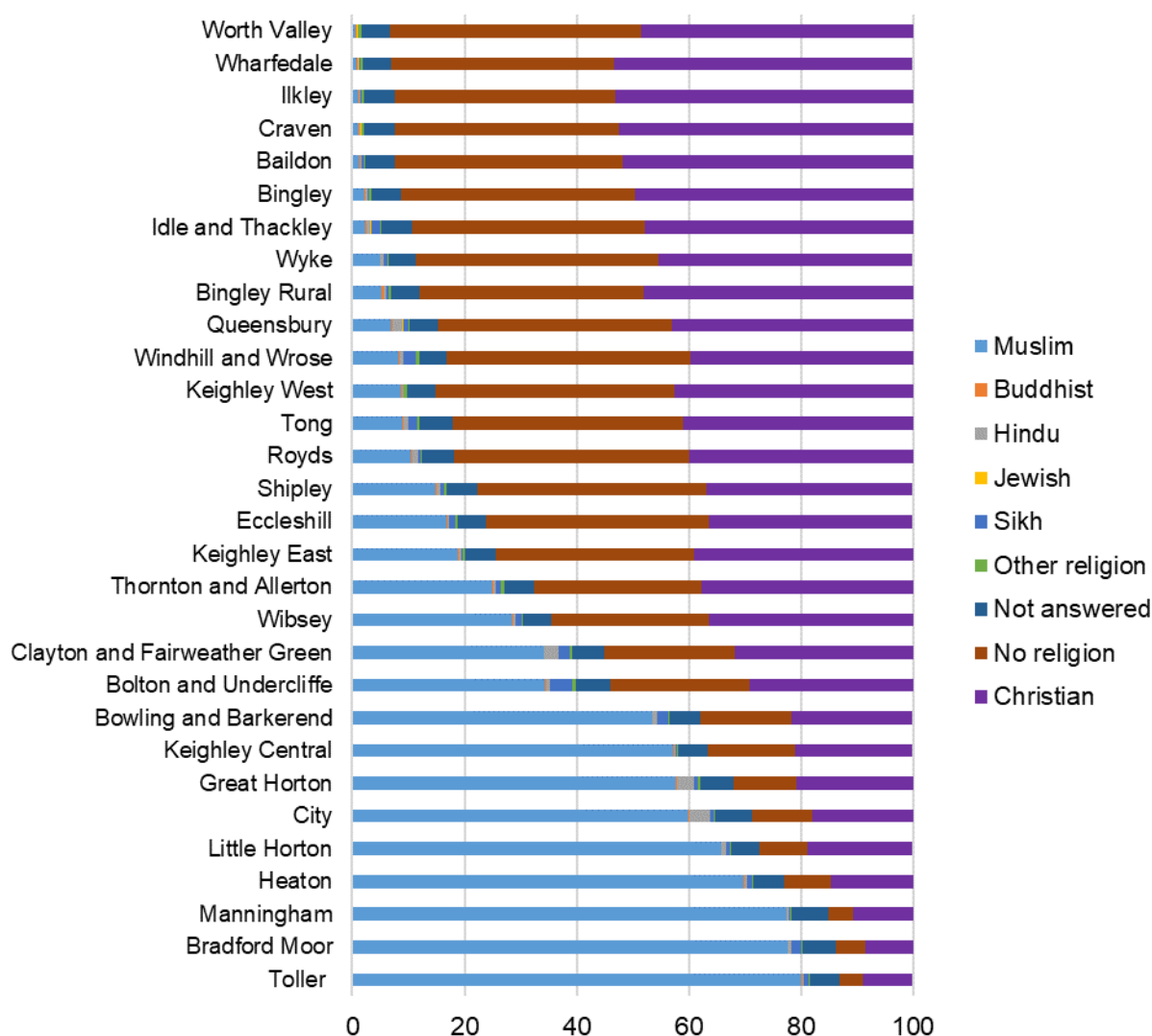
Wharfedale ward has the highest percentage of residents who identify as Christian (53.2%), followed by Ilkley (53%) and Craven (52.6%).

Bolton and Undercliffe ward has the highest percentage of residents who identify as Sikh (3.9%), followed by Windhill and Wrose (2.1%) and Bowling and Barkerend (2%).

City has the highest percentage of residents who identify as Hindu (3.8%), followed by Great Horton (3%) and Clayton and Fairweather Green (2.7%).

Worth Valley has the highest percentage of residents who chose to state that they have no religion (44.7%) followed by Windhill and Wrose (43.6%) and Wyke (43.3%).

% Religion by ward



Household composition

The census records how many people live in each household. In most wards, the highest percentage of households comprise one or two people. City ward contains the highest percentage of one person households by ward (42.5%), followed by Shipley (40.4%) and

Bingley (34.5%). Bradford Moor has the lowest percentage (20.1%), followed by Toller (22%) and Heaton (23.4%).

Craven has the highest percentage of two people households (39.3%), followed by Worth Valley (39%) and Baildon (38.8%). Manningham has the lowest percentage (13.5%) followed by Bradford Moor (15.7%) and Toller (16.4%).

6.7% of households in Manningham ward contain 8 or more people – the highest percentage in the District, followed by Toller (5.2%) and Bradford Moor (4.6%).

Data from the 2021 census

Ward population 2011 and 2021

2021 wards	2011	2021	% change
Baildon	15360	15920	4%
Bingley	18290	18040	-1%
Bingley Rural	17900	18870	5%
Bolton and Undercliffe	16370	17590	7%
Bowling and Barkerend	20620	22760	10%
Bradford Moor	21210	21790	3%
City	23490	23530	0.2%
Clayton and Fairweather Green	16980	18240	7%
Craven	16370	17700	8%
Eccleshill	17950	20320	13%
Great Horton	17680	19020	8%
Heaton	17120	19670	15%
Idle and Thackley	16140	17280	7%
Ilkley	14810	15040	1.6%
Keighley Central	18260	18470	1%
Keighley East	16780	17120	2%
Keighley West	16550	16980	3%
Little Horton	21550	22070	2.4%
Manningham	19980	20540	3%
Queensbury	16270	17560	8%
Royds	17360	17870	3%
Shipley	15480	15620	1%
Thornton and Allerton	17280	18530	7%
Toller	19910	20850	5%
Tong	20610	21060	2%
Wharfedale	11840	12060	1.9%
Wibsey	14670	15850	8%
Windhill and Wrose	16310	16920	4%
Worth Valley	14390	14070	-2.2%
Wyke	14950	15090	1%

Ethnic origin – percentage by wards

2022 ward	Asian, Asian British or Asian Welsh	Black, Black British, Black Welsh, Caribbean or African	Mixed or Multiple ethnic groups	White	Other ethnic group
Baildon	2.3	0.5	1.7	95.1	0.4
Bingley	2.9	0.7	1.8	94.2	0.4
Bingley Rural	6.1	0.5	2.3	90.5	0.6
Bolton and Undercliffe	38.6	1.9	3.7	53.0	2.7
Bowling and Barkerend	54.4	3.6	3.6	35.0	3.4

Bradford Moor	79.8	2.7	2.2	12.6	2.7
City (Bradford)	60.2	7.9	3.3	21.6	6.9
Clayton and Fairweather Green	39.6	1.9	3.2	53.2	2.0
Craven	2.1	0.5	1.1	96.1	0.3
Eccleshill	17.9	1.7	3.8	75.5	1.1
Great Horton	59.6	2.9	3.3	29.8	4.4
Heaton (Bradford)	71.9	1.1	2.5	21.7	2.8
Idle and Thackley	4.4	0.7	3.0	91.2	0.7
Ilkley	1.7	0.4	2.0	95.6	0.3
Keighley Central	59.5	0.7	1.5	36.3	2.0
Keighley East	20.2	0.6	2.1	76.2	0.9
Keighley West	8.9	0.6	2.4	87.4	0.7
Little Horton	64.2	5.1	3.3	22.4	4.9
Manningham	79.1	3.3	2.2	11.9	3.5
Queensbury (Bradford)	9.9	1.0	2.5	85.8	0.8
Royds	12.1	2.2	3.7	81.1	0.9
Shipley	16.5	1.0	3.1	78.2	1.2
Thornton and Allerton	27.0	2.0	4.1	65.3	1.6
Toller (Bradford)	82.7	1.5	2.0	10.6	3.2
Tong	11.6	4.4	4.3	78.5	1.2
Wharfedale (Bradford)	1.4	0.4	1.4	96.5	0.3
Wibsey	29.7	2.2	3.6	62.7	1.8
Windhill and Wrose	10.5	1.3	3.0	83.5	1.6
Worth Valley	0.7	0.3	1.4	97.3	0.2
Wyke	5.8	1.3	2.7	89.7	0.6

Religion – percentage by wards

2022 ward	No religion	Christian	Buddhist	Hindu	Jewish	Muslim	Sikh	Other religion	Not answered
Baildon	40.7	51.7	0.2	0.3	0.0	1.2	0.4	0.3	5.2
Bingley	41.7	49.6	0.3	0.4	0.1	2.0	0.1	0.5	5.3
Bingley Rural	39.9	48.1	0.3	0.5	0.0	5.2	0.4	0.6	5.0
Bolton and Undercliffe	24.8	29.3	0.2	0.8	0.0	34.3	3.9	0.6	6.2
Bowling and Barkerend	16.4	21.5	0.1	0.8	0.0	53.4	2.0	0.2	5.5
Bradford Moor	5.3	8.6	0.1	0.6	0.1	77.6	1.7	0.2	5.9
City	10.8	18.0	0.2	3.8	0.0	59.9	0.5	0.4	6.4
Clayton and Fairweather Green	23.3	31.8	0.1	2.7	0.0	34.1	1.9	0.5	5.6
Craven	39.9	52.6	0.3	0.3	0.1	0.9	0.1	0.4	5.5
Eccleshill	39.8	36.3	0.2	0.2	0.1	16.8	1.0	0.5	5.0
Great Horton	11.4	20.7	0.2	3.0	0.0	57.7	0.7	0.4	5.9
Heaton	8.5	14.6	0.1	0.6	0.0	69.8	0.8	0.2	5.4
Idle and Thackley	41.4	47.9	0.3	0.6	0.1	2.3	1.6	0.3	5.5
Ilkley	39.4	53.0	0.3	0.2	0.1	0.9	0.2	0.4	5.5
Keighley Central	15.5	21.0	0.1	0.3	0.0	57.3	0.1	0.3	5.3
Keighley East	35.3	39.0	0.2	0.4	0.0	18.8	0.2	0.5	5.6
Keighley West	42.6	42.5	0.2	0.2	0.0	8.7	0.1	0.5	5.2
Little Horton	8.6	18.7	0.1	0.9	0.0	65.7	0.6	0.3	5.0
Manningham	4.6	10.6	0.1	0.4	0.0	77.4	0.3	0.2	6.4
Queensbury	41.7	43.1	0.1	1.9	0.1	7.0	0.8	0.3	5.0
Royds	41.9	40.1	0.2	1.1	0.0	10.4	0.5	0.3	5.6

Shipley	40.8	36.7	0.2	0.7	0.1	14.8	0.5	0.5	5.6
Thornton and Allerton	29.8	37.7	0.1	0.6	0.0	25.0	0.8	0.6	5.4
Toller	4.2	8.9	0.1	0.4	0.0	80.1	0.8	0.2	5.2
Tong	41.2	41.1	0.2	0.9	0.0	8.9	1.6	0.3	5.9
Wharfedale	39.8	53.2	0.2	0.2	0.1	0.7	0.2	0.4	5.1
Wibsey	28.0	36.5	0.2	0.5	0.0	28.5	1.0	0.3	5.0
Windhill and Wrose	43.6	39.8	0.2	0.7	0.0	8.3	2.1	0.6	4.8
Worth Valley	44.7	48.6	0.2	0.1	0.1	0.5	0.1	0.7	5.1
Wyke	43.3	45.3	0.1	0.6	0.1	4.9	0.5	0.3	4.8

Household composition – total households and percentage of people in each household by ward

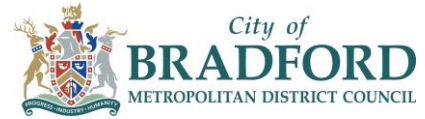
2022 ward	Total household spaces	% 1 person	% 2 people	% 3 people	% 4 people	% 5 people	% 6 people	% 7 people	% 8 or more people
Baildon	7,221	31.5	38.8	14.5	11.5	2.8	0.7	0.1	0.1
Bingley	8,278	34.5	35.8	14.4	11.8	2.7	0.7	0.2	0.1
Bingley Rural	8,349	29.7	37.9	15.7	11.7	3.8	0.7	0.3	0.2
Bolton and Undercliffe	6,650	30.9	27.2	14.7	13.7	7.1	3.8	1.5	1.1
Bowling and Barkerend	7,715	30.9	21.5	13.9	12.7	9.8	6.0	2.8	2.4
Bradford Moor	5,900	20.1	15.7	14.4	15.0	15.0	9.6	5.4	4.6
City	8,214	42.5	18.3	11.3	9.4	7.2	4.8	3.2	3.2
Clayton and Fairweather Green	6,636	27.9	30.1	15.3	13.6	7.1	3.7	1.3	0.9
Craven	8,127	32.4	39.3	13.8	10.8	2.8	0.7	0.1	0.0
Eccleshill	8,089	29.6	30.3	16.8	12.7	6.2	2.6	0.9	0.7
Great Horton	6,285	25.9	22.8	15.6	13.8	11.5	5.8	2.9	1.8
Heaton	5,721	23.4	19.0	13.9	14.6	14.0	7.9	3.8	3.6
Idle and Thackley	7,716	32.1	36.1	15.6	11.7	3.3	0.8	0.3	0.1
Ilkley	6,737	33.0	36.5	13.2	13.0	3.5	0.7	0.1	0.0
Keighley Central	6,225	33.8	22.4	10.4	10.4	9.5	6.2	3.6	3.6
Keighley East	7,006	29.2	34.9	14.7	12.1	5.0	2.2	1.2	0.6
Keighley West	7,332	31.8	34.4	15.5	11.1	4.8	1.5	0.6	0.3
Little Horton	6,595	23.7	17.5	15.0	14.9	13.7	8.1	4.4	2.7
Manningham	5,651	29.7	13.5	10.7	11.1	13.4	9.0	5.8	6.7
Queensbury	7,326	28.3	34.3	17.3	13.7	4.5	1.3	0.3	0.3
Royds	7,328	31.4	30.1	17.0	13.4	5.1	1.8	0.7	0.5
Shipley	7,179	40.4	31.1	12.4	9.9	3.6	1.6	0.6	0.4
Thornton and Allerton	7,415	30.5	31.0	15.9	11.8	6.9	2.3	1.0	0.5
Toller	5,650	22.0	16.4	12.3	13.5	15.2	9.7	5.7	5.2
Tong	8,617	33.7	27.7	16.9	12.1	6.5	2.0	0.7	0.3
Wharfedale	5,128	26.6	37.3	16.0	15.9	3.7	0.4	0.1	0.0
Wibsey	6,348	30.7	30.4	15.9	11.9	6.7	2.9	0.9	0.6
Windhill and Wrose	7,386	33.3	32.3	16.0	12.1	4.1	1.4	0.4	0.3

Worth Valley	6,425	31.3	39.0	15.0	10.9	2.9	0.7	0.1	0.0
Wyke	6,617	31.8	34.9	15.8	11.5	4.3	1.2	0.4	0.1

Data sources and further information

Source: Office for National Statistics (ONS) 2021 Census for England and Wales

Link: www.ons.gov.uk/census



Contact: Catriona Colborn

Email: catriona.colborn@bradford.gov.uk

Office of the Chief Executive,

City of Bradford Metropolitan District Council,

2nd Floor, Britannia House, Broadway, Bradford BD1 1HY

Unless marked otherwise, you are free to use the content of this bulletin in your own work as long as you quote the source.

The wording in this publication can be made available in other formats such as large print. Please call 07971 014319