



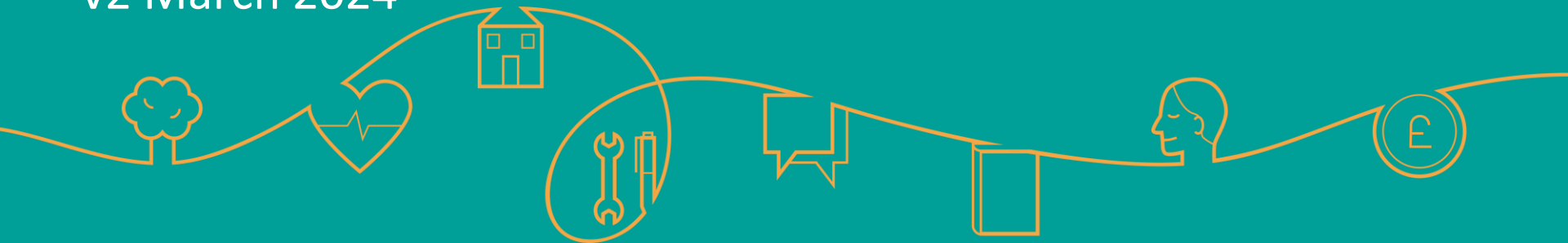
Reducing  
Inequalities  
Alliance

Bradford District and Craven  
Health and Care Partnership



# Quadrant Community Partnership

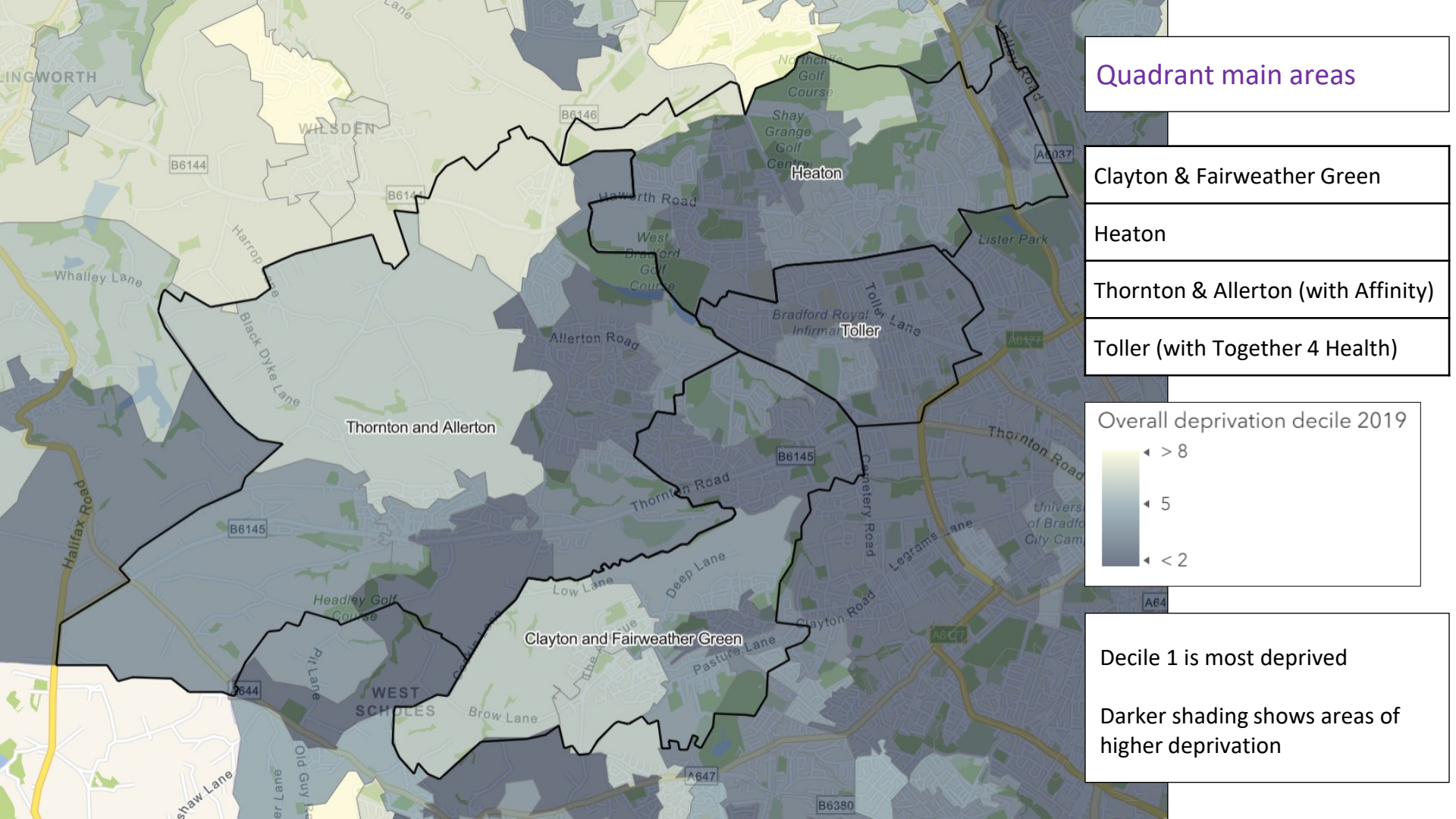
Core20Plus5 Data Set  
v2 March 2024



# Introduction

- The information in these slides is intended to identify local health needs and to support decision-making in communities as part of the [Core20PLUS5](#) approach. The slides focus on deprivation, smoking and the five clinical areas included in Core20PLUS5 (Maternity, Severe Mental Illness, Chronic Respiratory Disease, early Cancer diagnosis, Hypertension case-finding).
- For information on Inclusion Health please see Inclusion Health in Bradford and Craven 2024 (in development, link to be added).
- The information in the slides is not related to performance and the slides do not provide a performance assessment of organisations.
- Other sources of information about health in local areas include the Joint Strategic Needs Assessments for [Bradford](#) and [Craven](#) produced by the Local Authority Public Health teams, and the [Office for Health Improvement and Disparities \(OHID\)](#).
- Please contact [anna.smith2@bradford.nhs.uk](mailto:anna.smith2@bradford.nhs.uk) with any queries or requests.





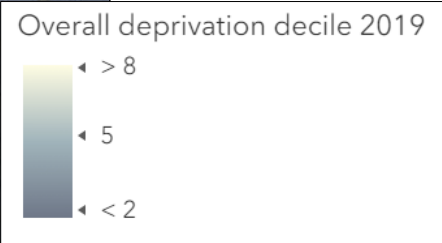
Quadrant main areas

Clayton & Fairweather Green

Heaton

Thornton & Allerton (with Affinity)

Toller (with Together 4 Health)



Decile 1 is most deprived  
Darker shading shows areas of higher deprivation

# Quadrant Community Partnership Summary

- Areas of high deprivation, especially in Toller
- Low cancer screening, antenatal booking
- High prevalence of diabetes and smoking
- Toller and Heaton: high proportion aged under 5
- Toller: high premature mortality from all causes and from circulatory disease, low birthweight, late antenatal bookings
- Heaton: high infant mortality
- Clayton & Fairweather Green and Toller: high emergency admissions with COPD
- Clayton & Fairweather Green: high respiratory mortality, high premature mortality from cancer
- Thornton & Allerton: premature mortality from cancer high compared with England (similar to Bradford average)



## Overview: Quadrant

Measure	Clayton & Fwthr Green	Heaton	Thornton & Allerton	Toller	Bradford average	Bradford highest	Bradford lowest
Percentage aged under 5 (2020, England 5.7)	6.9	8.2	7.0	8.3	7.0	9.4	3.6
Percentage aged 65+ (2020, England 18.5)	14.3	10.2	15.9	9.0	15.1	29.0	5.7
Overall deprivation (2019, England 21.7)	35.8	34.9	32.6	44.4	34.7	59.8	5.9
Year 6 obesity (2020/21-22/23, England 22.5)	29.7	28.8	26.3	28.2	26.7	33.3	10.2
Standardised premature mortality (2016-20, England 100.00)	131.1	124.2	125.4	140.1	122.4	195.4	63.4

Key				
Continuous grading				
District lowest				District highest
Statistical difference				
	Worse than district average			
	Better than district average			
	Similar to district average			



# Smoking

Community Partnership	Smoking prevalence 22/23
Affinity	19.64%
Keighley and Worth Valley	16.88%
Bingley Bubble	10.87%
Bradford 4 Plus	23.09%
Central 5	21.24%
Craven Communities Together	10.88%
Five Lane	21.37%
Horton and City Health Collaboration	16.41%
Quadrant	18.28%
Together 4 Health	19.74%
Wharfedale	7.21%
WISHH	15.73%
WoW	21.82%
Bradford district and Craven	17.59%

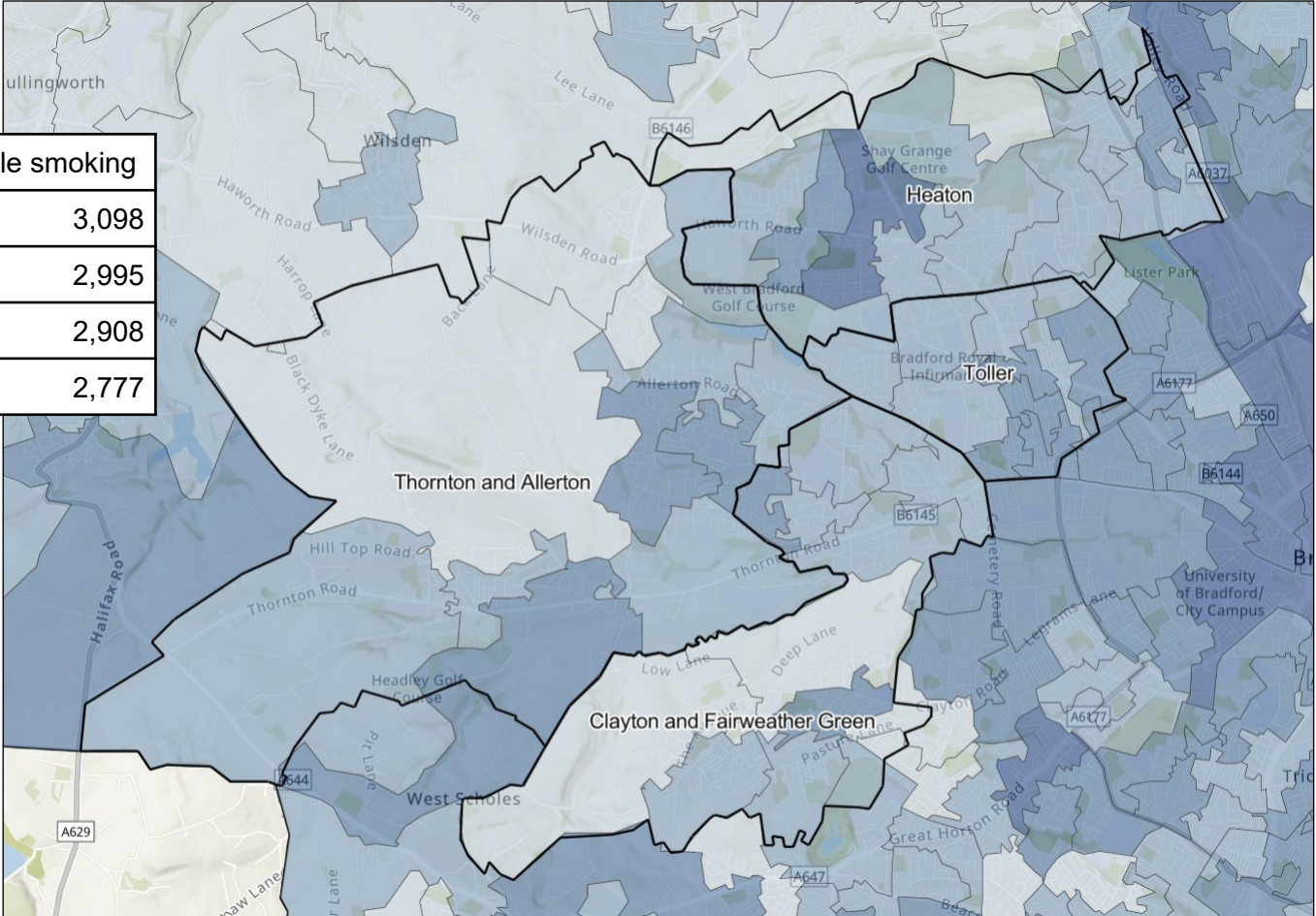
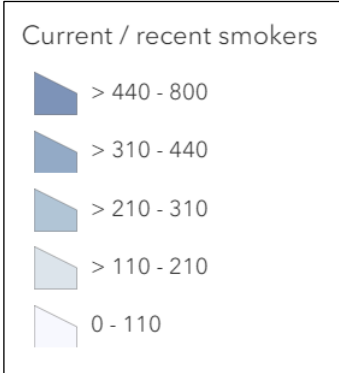
Key				
Continuous grading				
District lowest				District highest





# Quadrant: smoking

Ward	People smoking
Thornton & Allerton	3,098
Toller	2,995
Clayton & Fairweather Green	2,908
Heaton	2,777



# Maternity: Quadrant

Measure	Clayton & Fwthr Green	Heaton	Thornton & Allerton	Toller	Bradford average	Bradford highest	Bradford lowest
Low birth weight (2016-20, England 6.8)	7.0	9.2	5.9	10.4	8.1	10.7	3.3
% Antenatal bookings with gestation over 10 weeks	53.8	54.5	52.5	58.8	50.4	59.7	23.6
Infant mortality 2019-21 (deaths per 1,000 live births, England 3.9)	3.3	8.7	5.9	6.5	6.4	15.8	0.0

Key				
Continuous grading				
District lowest				District highest
Statistical difference				
	Worse than district average			
	Better than district average			
	Similar to district average			





## Severe Mental Illness

Community Partnership	SMI prevalence Dec 23	Annual health checks Apr - Dec 23
Affinity	1.15%	57.06%
Keighley and Worth Valley	1.26%	49.18%
Bingley Bubble	0.91%	53.69%
Bradford 4 Plus	1.15%	65.63%
Central 5	1.36%	63.43%
Craven Communities Together	0.97%	52.99%
Five Lane	1.01%	66.40%
Horton and City Health Collaboration	0.99%	70.89%
Quadrant	1.24%	61.07%
Together 4 Health	1.15%	78.57%
Wharfedale & Silsden	0.81%	44.98%
WISHH	1.01%	57.68%
WoW	1.05%	48.21%
Bradford district and Craven	1.11%	58.83%

Severe mental illness: premature mortality	Standardised rate per 100,000
Bradford	109.8
North Yorkshire	87.2
Yorkshire and Humber	108.8
England	103.6

Key				
Continuous grading				
District lowest				District highest
District best				District worst
Statistical difference				
	Worse than regional and England averages			
	Similar to regional and England averages			
	Better than regional and England averages			

## Chronic respiratory disease: Quadrant

Community Partnership	COPD prevalence Dec 23	% on COPD register with flu vaccination in current year	% on COPD register with 2nd COVID vaccination ever
Affinity	2.60%	76.60%	92.26%
Keighley and Worth Valley	2.30%	72.89%	91.24%
Bingley Bubble	2.00%	85.89%	94.13%
Bradford 4 Plus	3.54%	80.45%	94.05%
Central 5	1.38%	73.49%	85.28%
Craven Communities Together	1.95%	86.41%	94.48%
Five Lane	2.69%	79.18%	90.81%
Horton and City Health Collaboration	0.90%	68.50%	85.24%
Quadrant	1.67%	77.70%	90.85%
Together 4 Health	1.38%	67.62%	86.66%
Wharfedale & Silsden	1.41%	90.99%	97.85%
WISHH	2.33%	77.96%	93.79%
WoW	2.28%	71.38%	91.10%
Bradford district and Craven	2.03%	76.65%	91.48%

Key				
Continuous grading				
District lowest				District highest
District best				District worst
Statistical difference				
	Worse than district average			
	Better than district average			
	Similar to district average			

Measure	Clayton & Fwthr Green	Heaton	Thornton & Allerton	Toller	Bradford average	Bradford highest	Bradford lowest
Standardised all age mortality from respiratory disease (2016-20, England 100.0)	185.0	146.1	124.0	112.2	120.1	196.2	44.8
Standardised emergency hospital admissions for COPD (2016/17-20/21, England 100.0)	172.6	132.3	122.6	187.7	127.0	302.7	28.7



Community Partnership	Bowel cancer screening in last 30 months aged 60-74	Breast cancer screening in last 30 months aged 50-70	Cervical screening in target period aged 35-64
Affinity	71.28%	58.39%	76.47%
Keighley and Worth Valley	72.21%	59.05%	65.12%
Bingley Bubble	77.20%	66.45%	80.00%
Bradford 4 Plus	66.13%	52.55%	69.46%
Central 5	60.60%	40.02%	60.97%
Craven Communities Together	79.13%	67.35%	76.96%
Five Lane	68.99%	53.88%	69.85%
Horton and City Health Collaboration	51.46%	37.52%	56.47%
Quadrant	64.16%	48.49%	58.78%
Together 4 Health	53.91%	36.30%	57.71%
Wharfedale & Silsden	81.62%	72.89%	82.56%
WISHH	73.36%	60.88%	76.15%
WoW	66.32%	51.30%	59.38%
Bradford district and Craven	70.04%	56.00%	67.05%

## Early cancer diagnosis: Quadrant

Thornton & Allerton: premature mortality from cancer high compared with England (similar to Bradford average)

Key				
Continuous grading				
District best				District worst
Statistical difference				
	Worse than district average			
	Better than district average			
	Similar to district average			

Measure	Clayton & Fwthr Green	Heaton	Thornton & Allerton	Toller	Bradford average	Bradford highest	Bradford lowest
Standardised incidence (new cases) of all cancers (2015-19, England 100.0)	98.7	85.0	106.4	76.0	99.3	111.2	76.0
Standardised incidence (new cases) of lung cancer (2015-19, England 100.0)	133.4	87.4	128.2	71.6	111.1	197.3	52.5
Standardised premature mortality from cancer (2016-20, England 100.0)	141.3	100.9	125.1	94.3	109.1	149.5	76.3



Community Partnership	Hypertension prevalence Dec 23	Diabetes prevalence Dec 23
Affinity	18.26%	7.09%
Keighley and Worth Valley	14.96%	7.03%
Bingley Bubble	19.07%	5.90%
Bradford 4 Plus	15.04%	7.26%
Central 5	9.56%	8.50%
Craven Communities Together	19.89%	6.42%
Five Lane	14.57%	7.67%
Horton and City Health Collaboration	8.77%	8.08%
Quadrant	13.36%	8.48%
Together 4 Health	11.32%	9.62%
Wharfedale & Silsden	18.35%	4.91%
WISHH	17.16%	6.59%
WoW	13.48%	7.69%
Bradford district and Craven	14.45%	7.44%

## High blood pressure (hypertension): Quadrant

- Estimated hypertension prevalence in England is about 26% of all adults
- Risk factors include older age and social deprivation
- Diabetes and hypertension may occur together

Key				
Continuous grading				
District lowest				District highest
Statistical difference				
	Worse than district average			
	Better than district average			
	Similar to district average			

Measure	Clayton & Fwthr Green	Heaton	Thornton & Allerton	Toller	Bradford average	Bradford highest	Bradford lowest
Standardised premature mortality from circulatory disease (2016-20, England 100.0)	118.5	140.2	138.2	200.3	142.6	261.7	56.2



# Data sources and contact details

**Summary and Overview** OHID Fingertips <https://fingertips.phe.org.uk/>

**Smoking** Quality and Outcomes Framework (QOF)

**Maternity** Birth weight: OHID Fingertips, Antenatal bookings: WY Maternity dashboard, Infant mortality: CBMDC Public Health

**Severe Mental Illness** Prevalence and health checks: locally obtained figures), Mortality: OHID Fingertips

**Early cancer diagnosis** Screening: locally obtained figures, Incidence and mortality: OHID Fingertips

**Hypertension** Prevalence: locally obtained figures, Mortality: OHID Fingertips

Hypertension risk factors and estimated prevalence:

<https://cks.nice.org.uk/topics/hypertension/background-information/>

See also: **Inclusion Health** in Bradford District and Craven: Rapid Health Needs Assessment January 2024

Bradford ward profiles: <https://ubd.bradford.gov.uk/district-and-ward-profiles/ward-profiles-2023/>

**Contact** [anna.smith2@bradford.nhs.uk](mailto:anna.smith2@bradford.nhs.uk)