



Reducing  
Inequalities  
Alliance

Bradford District and Craven  
Health and Care Partnership



# Craven Communities Together Community Partnership

Core20Plus5 Data Set  
V2 March 2024



# Introduction

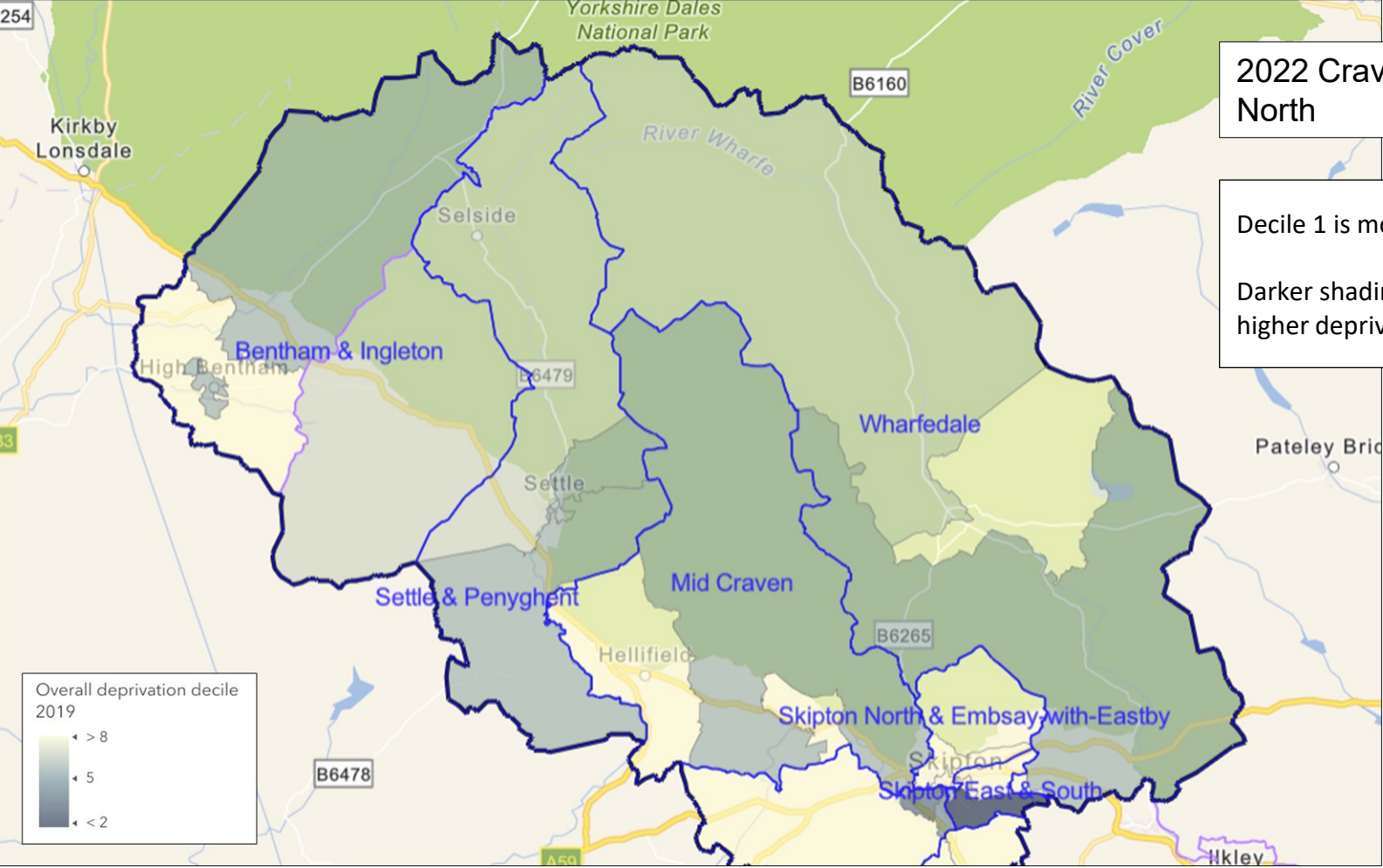
- The information in these slides is intended to identify local health needs and to support decision-making in communities as part of the [Core20PLUS5](#) approach. The slides focus on deprivation, smoking and the five clinical areas included in Core20PLUS5 (Maternity, Severe Mental Illness, Chronic Respiratory Disease, early Cancer diagnosis, Hypertension case-finding).
- For information on Inclusion Health please see Inclusion Health in Bradford and Craven 2024 (in development, link to be added).
- The information in the slides is not related to performance and the slides do not provide a performance assessment of organisations.
- Other sources of information about health in local areas include the Joint Strategic Needs Assessments for [Bradford](#) and [Craven](#) produced by the Local Authority Public Health teams, and the [Office for Health Improvement and Disparities \(OHID\)](#).
- Please contact [anna.smith2@bradford.nhs.uk](mailto:anna.smith2@bradford.nhs.uk) with any queries or requests.



# 2022 Craven NY wards - North

Decile 1 is most deprived

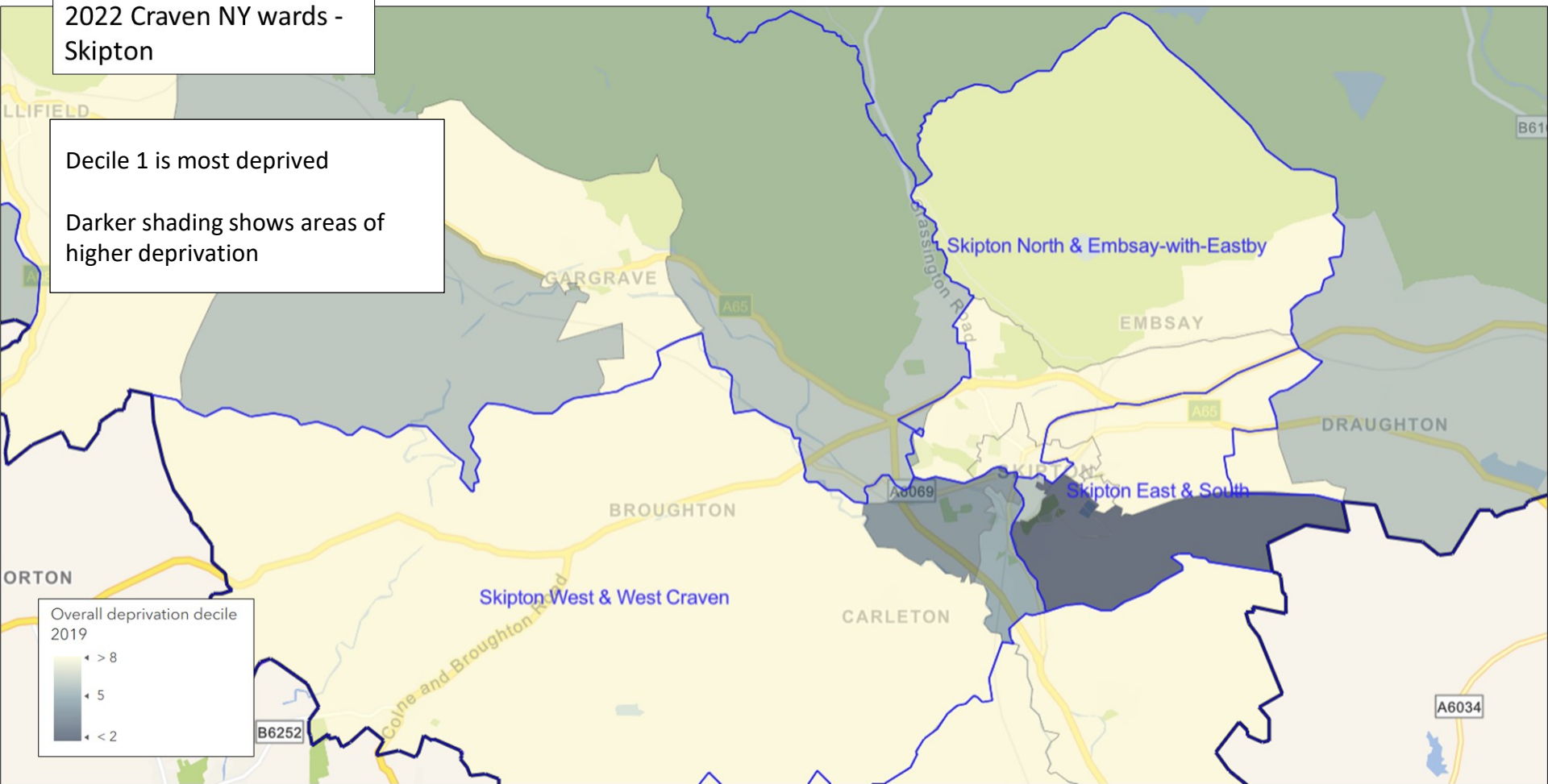
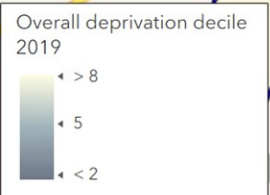
Darker shading shows areas of higher deprivation

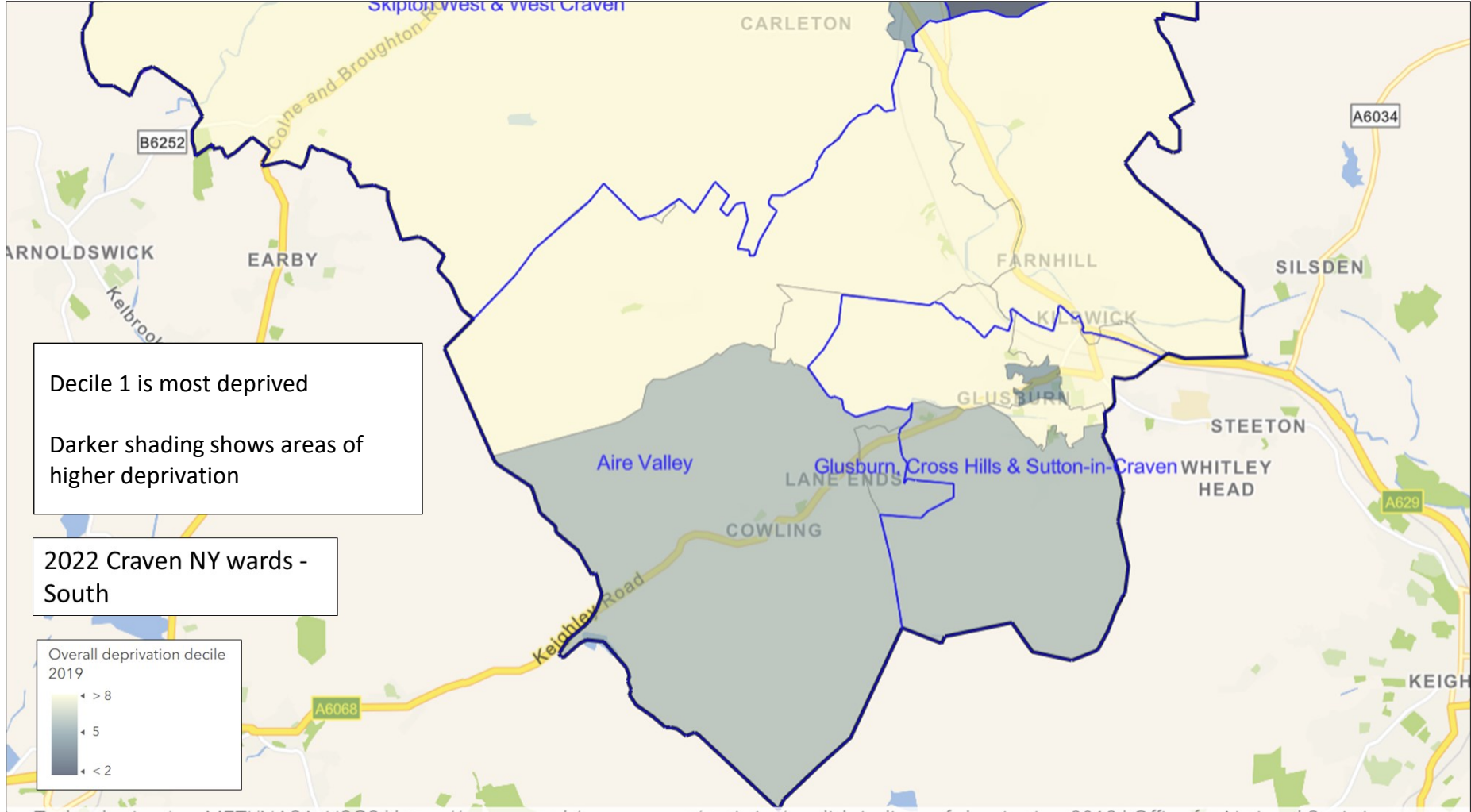


# 2022 Craven NY wards - Skipton

Decile 1 is most deprived

Darker shading shows areas of higher deprivation





Decile 1 is most deprived

# Craven Communities Together CP Summary

- Skipton South: high premature mortality from all causes and from circulatory disease, high all-age mortality from respiratory disease, high incidence of all cancers
- Skipton South, Skipton West: high incidence of lung cancer
- High emergency admissions with COPD: Settle & Ribblebanks, Skipton South, Skipton West, Sutton-in-Craven

## **Craven Communities Together district**

- More than a quarter of people aged 65+
- Low completeness of physical health checks for people with severe mental illness



# Overview: Craven Communities Together

Measure	Aire Valley w Lothersdale	Barden Fell	Cowling	Embsay-with-Eastby	Gargrave & Malhamdale	Glusburn	Grassington	Hellfield & Long Preston	Ingleton & Clapham	Penyghent	Settle & Ribblesbanks	Skipton East	Skipton North	Skipton South	Skipton West	Sutton-in-Craven	Upper Wharfedale	West Craven	Craven dist average	Craven dist highest	Craven dist lowest
Percentage aged under 5 (2020, England 5.7)	3.8	4.1	6.2	5.3	2.2	5.1	3.1	4.0	3.8	2.2	2.8	5.5	3.9	6.3	5.1	3.9	3.1	4.0	4.2	6.3	2.2
Percentage aged 65+ (2020, England 18.5)	25.8	24.9	18.6	27.4	31.9	27.4	37.0	26.8	31.5	31.4	36.4	31.7	29.6	16.4	21.6	23.7	39.2	27.7	27.8	39.2	16.4
Overall deprivation (2019, England 21.7)	7.7	15.8	14.3	4.2	12.8	11.0	6.3	9.4	14.1	13.7	14.4	7.9	5.7	27.3	20.7	12.1	12.3	9.6	12.8	27.3	4.2
Year 6 obesity (2020/21-22/23, England 22.5)	Low numbers	Low numbers	17.6	Low numbers	15.4	19.0	Low numbers	Low numbers	16.7	Low numbers	Low numbers	Low numbers	14.3	25.0	19.0	19.0	Low numbers	Low numbers	N Yorks 19.4	25.0	14.3
Standardised premature mortality (2016-20, England 100.00)	75.0	58.9	88.9	67.6	48.7	78.4	64.4	63.6	82.3	49.0	95.1	79.2	65.3	136.2	99.3	84.2	62.0	46.5	77.0	136.2	46.5

<b>Key</b>				
<b>Continuous grading</b>				
District lowest				District highest
<b>Statistical difference</b>				
	Worse than district average			
	Better than district average			
	Similar to district average			



# Smoking

Community Partnership	Smoking prevalence 22/23
Affinity	19.64%
Keighley and Worth Valley	16.88%
Bingley Bubble	10.87%
Bradford 4 Plus	23.09%
Central 5	21.24%
Craven Communities Together	10.88%
Communities Together Five Lane	21.37%
Horton and City Health Collaboration	16.41%
Quadrant	18.28%
Together 4 Health	19.74%
Wharfedale	7.21%
WISHH	15.73%
WoW	21.82%
Bradford district and Craven	17.59%

Key				
Continuous grading				
District lowest				District highest

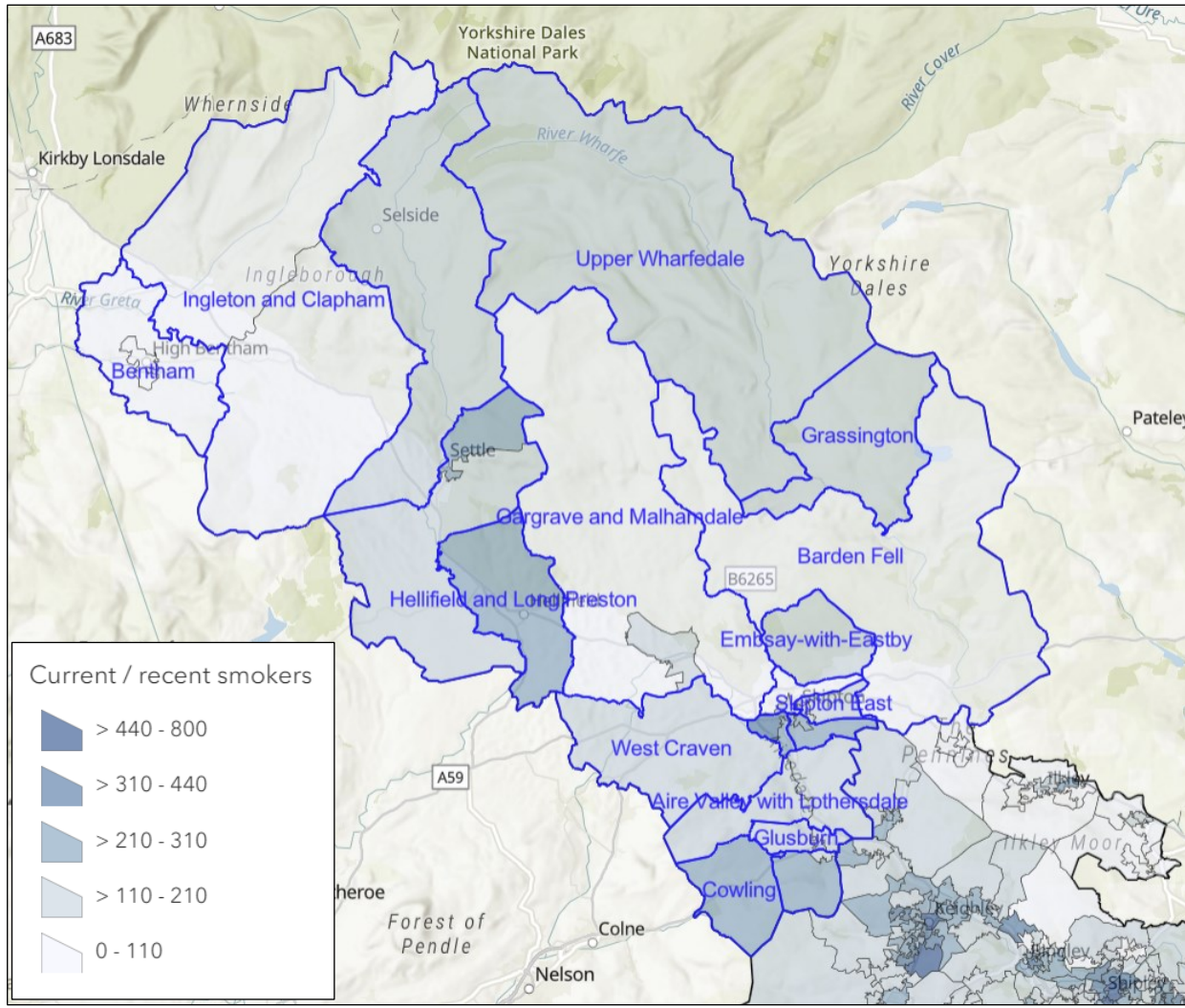




### Craven Communities Together: smoking

- People registered with Bradford and Craven Communities Together GPs (most people in Bentham are registered with Lancashire and South Cumbria ICB)
- Numbers are those with record of smoking added in last 5 years – may be an underestimate in some areas

Ward	People smoking
Skipton South	694
Skipton West	640
Sutton-in-Craven	437
Glusburn	430
Settle and Ribblebanks	386
Skipton East	308
Aire Valley with Lothersdale	278
Skipton North	275
Gargrave and Malhamdale	246
Cowling	243
Hellfield and Long Preston	236
West Craven	138
Penyghent	132
Upper Wharfedale	124
Embsay-with-Eastby	119
Grassington	113
Barden Fell	93
Ingleton and Clapham	70



# Maternity: Craven Communities Together

Measure	Aire Valley w Lothersdale	Barden Fell	Cowling	Embsay-with-Eastby	Gargrave & Malhamdale	Glusburn	Grassington	Hellfield & Long Preston	Ingleton & Clapham	Penyghent	Settle & Ribblesbanks	Skipton East	Skipton North	Skipton South	Skipton West	Sutton-in-Craven	Upper Wharfedale	West Craven	Craven dist average	Craven dist highest	Craven dist lowest
Low birth weight (2016-20, England 6.8)	3.1	8.9	6.3	Low numbers	5.8	4.1	Low numbers	5.0	9.0	Low numbers	4.0	3.0	3.4	6.2	8.1	4.9	Low numbers	7.2	5.5	9.0	3.0
% Antenatal bookings with gestation over 10 weeks	23.5	27.3	15.8	33.3	26.7	20.0	33.3	23.1	50.0	33.3	29.4	24.0	23.8	28.6	30.3	25.0	42.9	27.3	26.9	50.0	15.8

Infant mortality 2020-22	Deaths per 1,000 live births
North Yorkshire (below regional average)	3.2
Yorkshire and Humber	4.7
England	4.0

**Key**

**Continuous grading**

District lowest				District highest

**Statistical difference**

	Worse than district average
	Better than district average
	Similar to district average



## Severe Mental Illness

Community Partnership	SMI prevalence Dec 23	Annual health checks Apr - Dec 23
Affinity	1.15%	57.06%
Keighley and Worth Valley	1.26%	49.18%
Bingley Bubble	0.91%	53.69%
Bradford 4 Plus	1.15%	65.63%
Central 5	1.36%	63.43%
Craven Communities Together	0.97%	52.99%
Five Lane	1.01%	66.40%
Horton and City Health Collaboration	0.99%	70.89%
Quadrant	1.24%	61.07%
Together 4 Health	1.15%	78.57%
Wharfedale & Silsden	0.81%	44.98%
WISHH	1.01%	57.68%
WoW	1.05%	48.21%
Bradford district and Craven	1.11%	58.83%

Severe mental illness: premature mortality	Standardised rate per 100,000
Bradford	109.8
North Yorkshire	87.2
Yorkshire and Humber	108.8
England	103.6

Key				
Continuous grading				
District lowest				District highest
District best				District worst
Statistical difference				
	Worse than regional and England averages			
	Similar to regional and England averages			
	Better than regional and England averages			

# Chronic respiratory disease: Craven Communities Together

Community Partnership	COPD prevalence Dec 23	% on COPD register with flu vaccination in current year	% on COPD register with 2nd COVID vaccination ever
Affinity	2.60%	76.60%	92.26%
Keighley and Worth Valley	2.30%	72.89%	91.24%
Bingley Bubble	2.00%	85.89%	94.13%
Bradford 4 Plus	3.54%	80.45%	94.05%
Central 5	1.38%	73.49%	85.28%
Craven Communities Together	1.95%	86.41%	94.48%
Five Lane	2.69%	79.18%	90.81%
Horton and City Health Collaboration	0.90%	68.50%	85.24%
Quadrant	1.67%	77.70%	90.85%
Together 4 Health	1.38%	67.62%	86.66%
Wharfedale & Silsden	1.41%	90.99%	97.85%
WISHH	2.33%	77.96%	93.79%
WoW	2.28%	71.38%	91.10%
Bradford district and Craven	2.03%	76.65%	91.48%

**Key**

**Continuous grading**

District lowest				District highest
District best				District worst

**Statistical difference**

- Worse than district average
- Better than district average
- Similar to district average

	Aire Valley w Lothersdale	Barden Fell	Cowling	Embsay-with Eastby	Gargrave & Malhamdale	Glusburn	Grassington	Hellfield & Long Preston	Ingleton & Clapham	Penyghent	Settle & Ribblesbanks	Skipton East	Skipton North	Skipton South	Skipton West	Sutton-in-Craven	Upper Wharfedale	West Craven	Craven dist average	Craven dist highest	Craven dist lowest
Standardised all age mortality from respiratory disease (2016-20, England 100.0)	78.1	34.5	97.7	73.9	81.3	68.5	42.3	66.9	85.0	47.0	69.7	66.8	85.6	167.4	107.2	57.5	56.8	107.2	75.6	167.4	34.5
Standardised emergency hospital admissions for COPD (2016/17-20/21, Bradford 127.0, Craven 56.4, England 100.0)	43.6	Low numbers	33.3	33.8	47.4	55.2	Low numbers	65.1	40.8	Low numbers	84.2	44.9	44.7	181.4	92.6	98.9	45.1	36.8	56.4	181.4	33.3

Community Partnership	Bowel cancer screening in last 30 months aged 60-74	Breast cancer screening in last 30 months aged 50-70	Cervical screening in target period aged 35-64
Affinity	71.28%	58.39%	76.47%
Keighley and Worth Valley	72.21%	59.05%	65.12%
Bingley Bubble	77.20%	66.45%	80.00%
Bradford 4 Plus	66.13%	52.55%	69.46%
Central 5	60.60%	40.02%	60.97%
Craven Communities Together	79.13%	67.35%	76.96%
Five Lane	68.99%	53.88%	69.85%
Horton and City Health Collaboration	51.46%	37.52%	56.47%
Quadrant	64.16%	48.49%	58.78%
Together 4 Health	53.91%	36.30%	57.71%
Wharfedale & Silsden	81.62%	72.89%	82.56%
WISHH	73.36%	60.88%	76.15%
WoW	66.32%	51.30%	59.38%
Bradford district and Craven	70.04%	56.00%	67.05%

## Early cancer diagnosis: Craven Communities Together

Key				
Continuous grading				
District best				District worst
Statistical difference				
	Worse than district average			
	Better than district average			
	Similar to district average			

	Aire Valley w Lothersdale	Barden Fell	Cowling	Embsay-with Eastby	Gargrave & Malhamdale	Glusburn	Grassington	Hellfield & Long Preston	Ingleton & Clapham	Penyghent	Settle & Ribblesbanks	Skipton East	Skipton North	Skipton South	Skipton West	Sutton-in-Craven	Upper Wharfedale	West Craven	Craven dist average	Craven dist highest	Craven dist lowest
Standardised incidence (new cases) of all cancers (2015-19, England 100.0)	92.3	89.7	104.8	111.6	99.8	94.0	92.9	97.8	76.3	100.0	93.0	80.4	96.9	118.0	102.5	109.6	99.3	94.4	97.0	118.0	76.3
Standardised incidence (new cases) of lung cancer (2015-19, England 100.0)	59.7	Low numbers	76.9	Low numbers	45.5	98.3	139.1	73.5	72.7	47.1	64.1	59.1	57.4	166.8	176.1	53.0	55.1	110.1	78.1	176.1	45.5
Standardised premature mortality from cancer (2016-20, England 100.0)	86.9	82.2	73.7	100.5	51.0	78.8	75.8	70.8	97.4	24.3	93.2	91.6	67.3	105.4	111.5	77.7	50.8	58.1	80.9	111.5	24.3

Community Partnership	Hypertension prevalence Dec 23	Diabetes prevalence Dec 23
Affinity	18.26%	7.09%
Keighley and Worth Valley	14.96%	7.03%
Bingley Bubble	19.07%	5.90%
Bradford 4 Plus	15.04%	7.26%
Central 5	9.56%	8.50%
<b>Craven Communities Together</b>	<b>19.89%</b>	<b>6.42%</b>
Five Lane	14.57%	7.67%
Horton and City Health Collaboration	8.77%	8.08%
Quadrant	13.36%	8.48%
Together 4 Health	11.32%	9.62%
Wharfedale & Silsden	18.35%	4.91%
WISHH	17.16%	6.59%
WoW	13.48%	7.69%
<b>Bradford district and Craven</b>	<b>14.45%</b>	<b>7.44%</b>

## High blood pressure (hypertension): Craven Communities Together

- Estimated hypertension prevalence in England is about 26% of all adults
- Risk factors include older age and social deprivation. Estimated hypertension prevalence in people aged over 60 is above 60%
- Public Health England estimated in 2017 that for every 10 people diagnosed with hypertension another 7 remain undiagnosed and untreated.
- Diabetes and hypertension may occur together

Key				
Continuous grading				
District lowest				District highest
Statistical difference				
	Worse than district average			
	Better than district average			
	Similar to district average			

Measure	Aire Valley w Lothersdale	Barden Fell	Cowling	Embsay-with Eastby	Gargrave & Malhamdale	Glusburn	Grassington	Hellfield & Long Preston	Ingleton & Clapham	Pennyghent	Settle & Ribblesbanks	Skipton East	Skipton North	Skipton South	Skipton West	Sutton-in-Craven	Upper Wharfedale	West Craven	Craven dist average	Craven dist highest	Craven dist lowest
Standardised premature mortality from circulatory disease (2016-20, England 100.0)	85.7	59.7	109.7	34.3	46.6	55.9	41.6	96.8	89.0	88.5	49.6	80.5	51.7	165.2	67.4	91.8	103.2	58.9	75.7	165.2	34.3

# Sources of information

**Summary and Overview** OHID Fingertips <https://fingertips.phe.org.uk/>

**Smoking** Quality and Outcomes Framework (QOF)

**Maternity** Birth weight: OHID Fingertips, Antenatal bookings: WY Maternity dashboard, Infant mortality: CBMDC Public Health

**Severe Mental Illness** Prevalence and health checks: locally obtained figures), Mortality: OHID Fingertips

**Early cancer diagnosis** Screening: locally obtained figures, Incidence and mortality: OHID Fingertips

**Hypertension** Prevalence: locally obtained figures, Mortality: OHID Fingertips, Hypertension risk factors and estimated prevalence: <https://cks.nice.org.uk/topics/hypertension/background-information/>

See also:

**Joint Strategic Needs Assessments** for [Bradford](#) and [Craven](#) produced by Local Authority Public Health teams

**Inclusion Health** in Bradford District and Craven: Rapid Health Needs Assessment 2024 (in development, link to be added)

**Bradford ward profiles** <https://ubd.bradford.gov.uk/district-and-ward-profiles/ward-profiles-2023/>