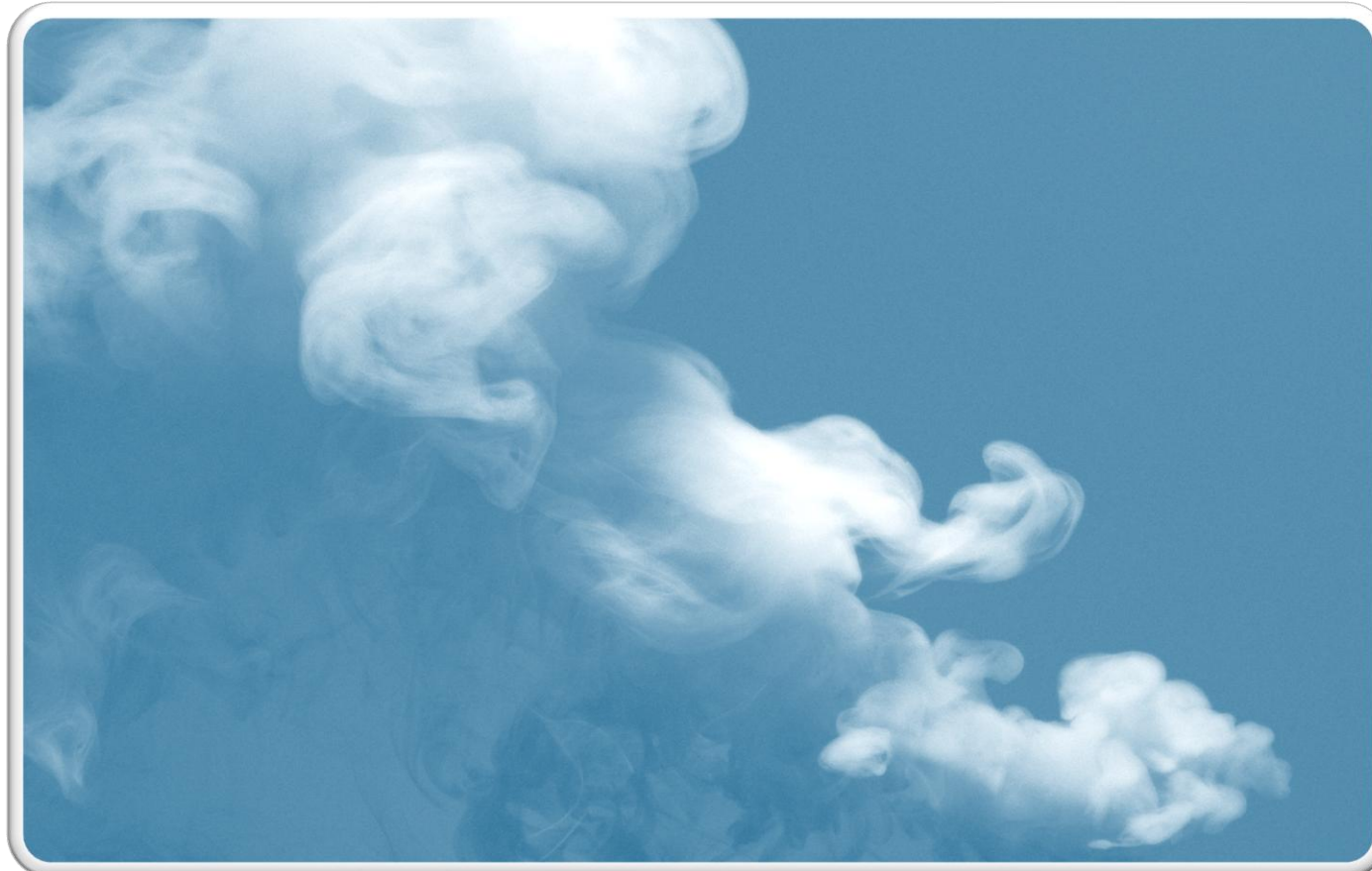


Smoking

Bradford District



City of
BRADFORD
METROPOLITAN DISTRICT COUNCIL

Contents

- **Prevalence of Smokers aged 18+ Years**
- **Smoking Prevalence: Gender and Socioeconomic Group**
- **Smoking Status at Time of Delivery**
- **Smokers with Mental Health Conditions**
- **Hospital Admissions**
- **Smoking Related Mortality**
- **Smokers Setting a Quit Date**
- **Successful Quitters**
- **Cost of Quitting Smoking**

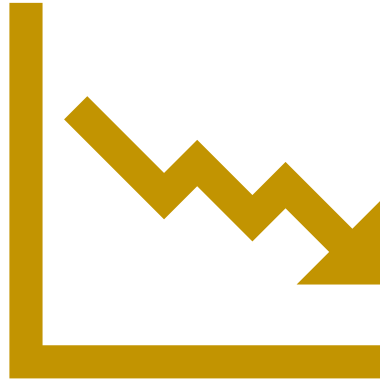


What Does the Data Tell Us?

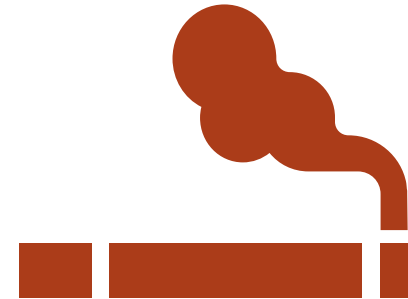
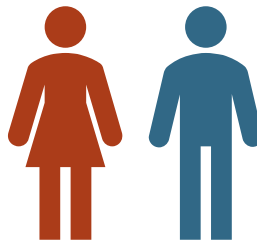
The prevalence of smokers aged 18+ in Bradford District has **improved** but remains **significantly worse** than Yorkshire & the Humber and England.



Prevalence of smoking in 18+ year olds in Bradford District is **lowest** in those in managerial and professional job roles and **highest** in those in routine and manual occupations.



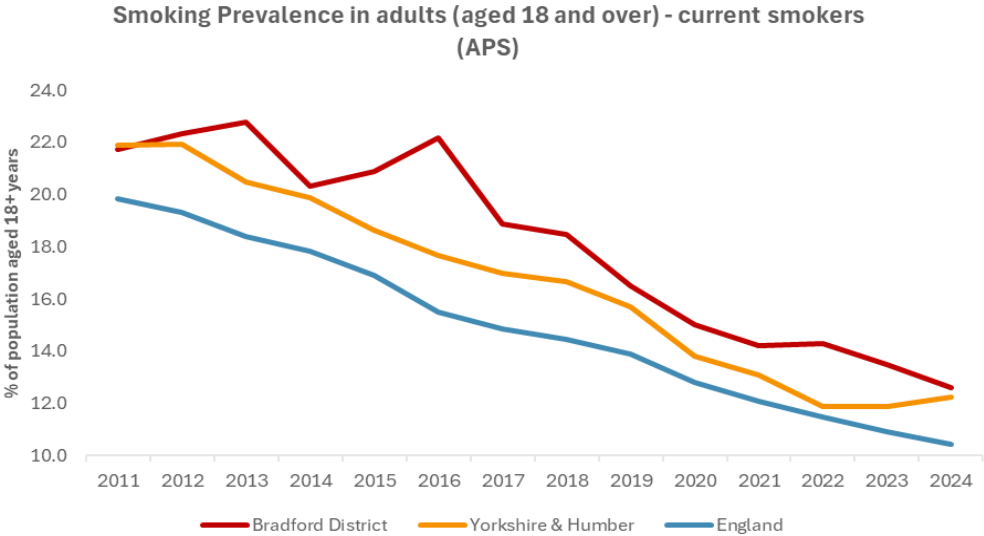
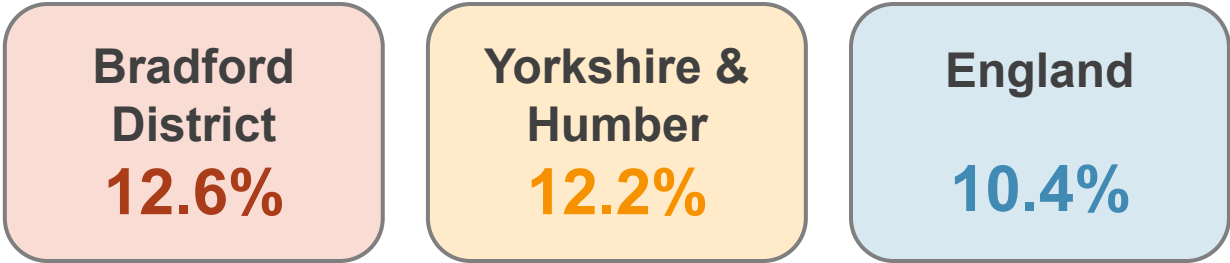
Males in Bradford District have a **higher prevalence** of 18+ year old smokers than females in the district.



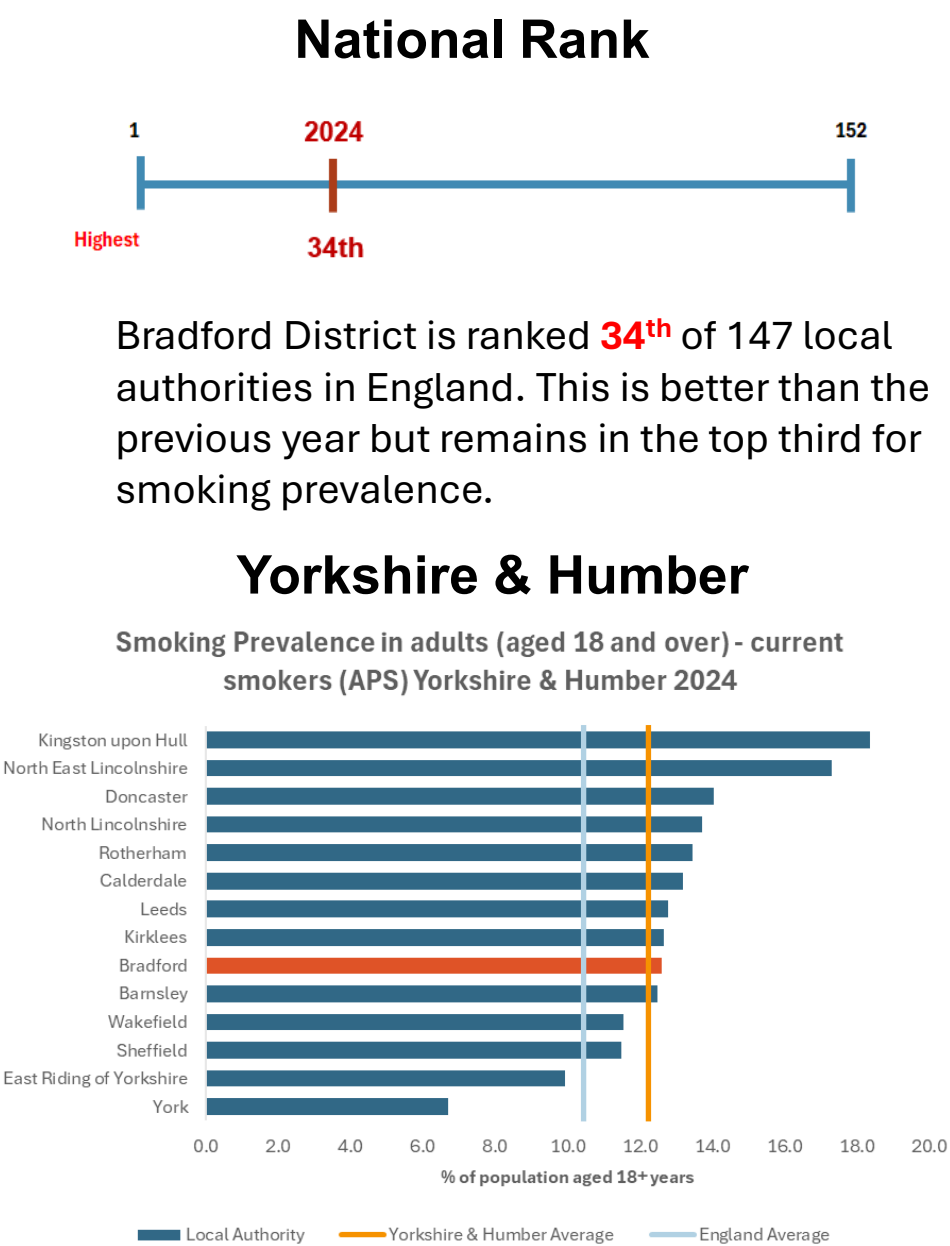
For smoking prevalence in adults with a mental health condition Bradford District has the **highest** in West Yorkshire and the **2nd highest** in Yorkshire & Humber

The average cost of quitting smoking per person in Bradford District is **£360** (2024/25)

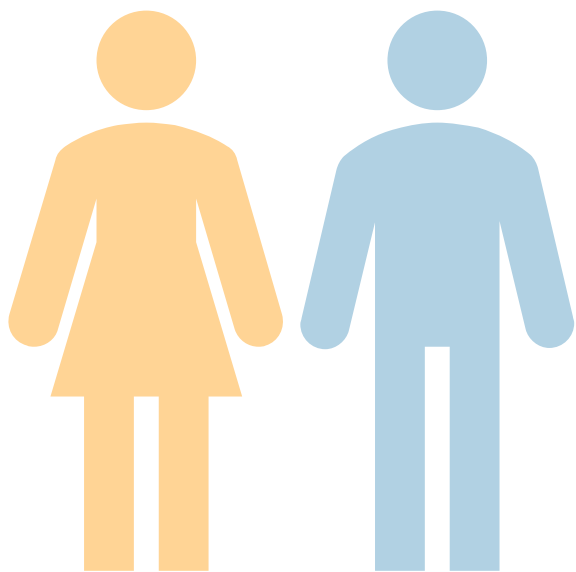
Prevalence of Smokers aged 18+ Years



In 2024, smoking prevalence among 18+ year olds in Bradford District was 12.6%, which is **above** the national average and **similar to** the regional average. Trends indicate that there has been an **improvement** across local and national averages. However, Bradford District remains higher than the average for England by 2.2 percentage points. When compared with other local authorities in Yorkshire & Humber, Bradford District is **6th lowest** and is the **2nd lowest in West Yorkshire**.



Smoking Prevalence: Gender & Socioeconomic Group



8.4%

17.2%

Compared with 147 local authorities in England...

Females in Bradford District are ranked **34th highest**

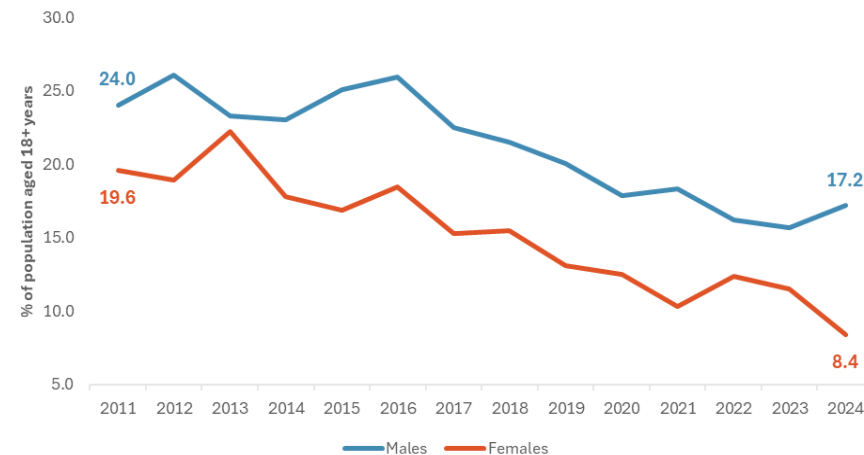
Males in Bradford District are ranked **13th highest**

Males in Bradford District have a **significantly higher** prevalence of smokers than females, with 17.2% of 18+ year old males being smokers, compared with 8.4% of 18+ year old females in 2024.

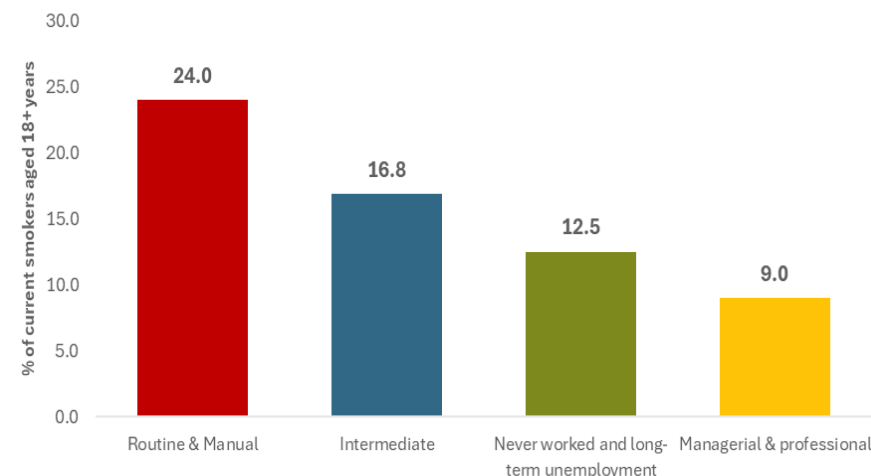
The percentage has increased from the previous year by 0.5 percentage point for males and has decreased by 3.9 percentage points for females.

The latest data indicates that those that work in routine and manual occupations have a **higher prevalence** of smokers, with 24% and the lowest is managerial and professional occupations with 9%. This is a difference of 15 percentage points.

Smoking Prevalence by sex in adults (aged 18 and over) - current smokers (APS)

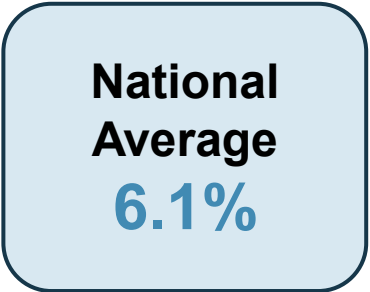
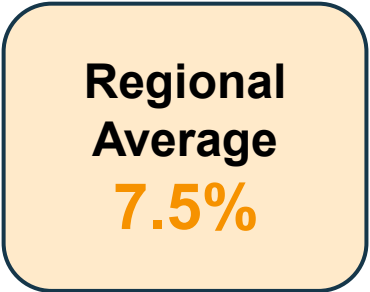
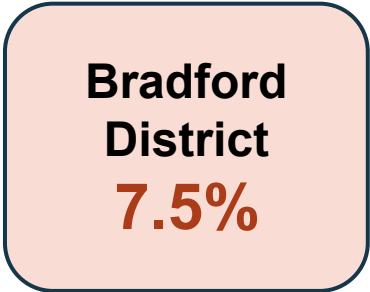
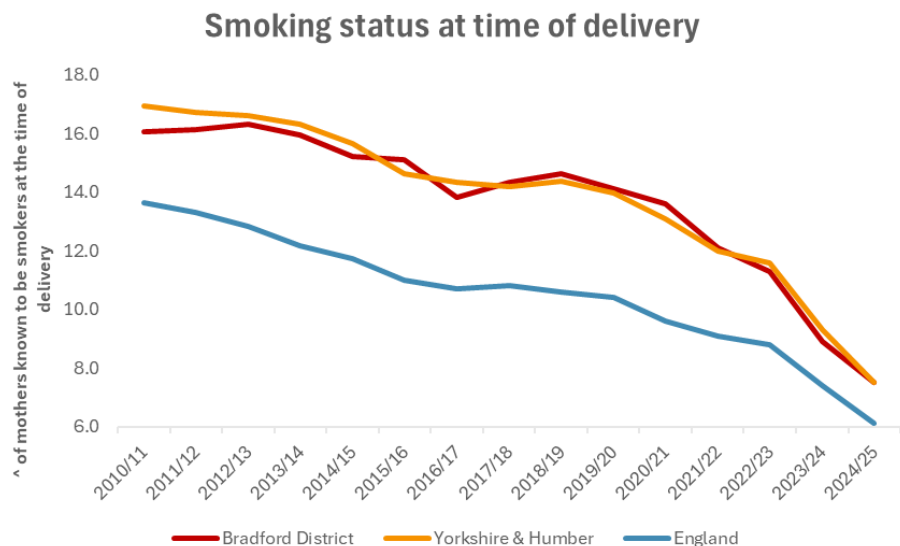


Smoking Prevalence in adults (aged 18 and over) - current smokers (APS) by socioeconomic status: 2022-24



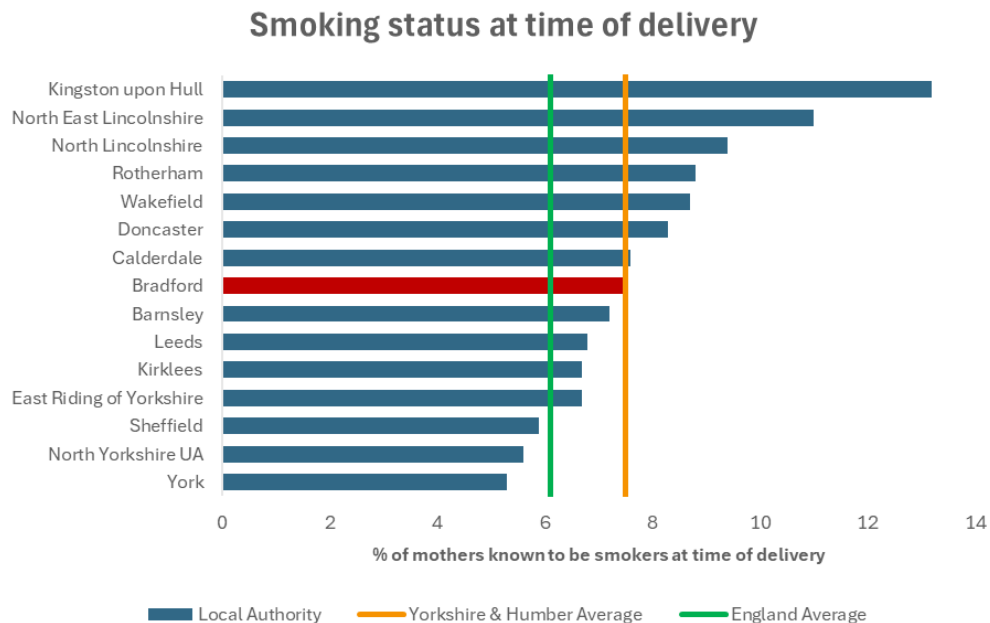
Smoking Status at Time of Delivery

Latest Data (2024/25)



Bradford District’s prevalence of women who were smokers at the time of delivery has consistently been **significantly worse** than that of England, and **similar to** Yorkshire & the Humber. However, Bradford District’s prevalence has **improved** when compared to the previous year.

Compared with other local authorities in Yorkshire & the Humber, Bradford District is **8th highest** and sits in the middle. When compared with other local authorities in West Yorkshire, Bradford District is **3rd highest** after Wakefield and Calderdale.



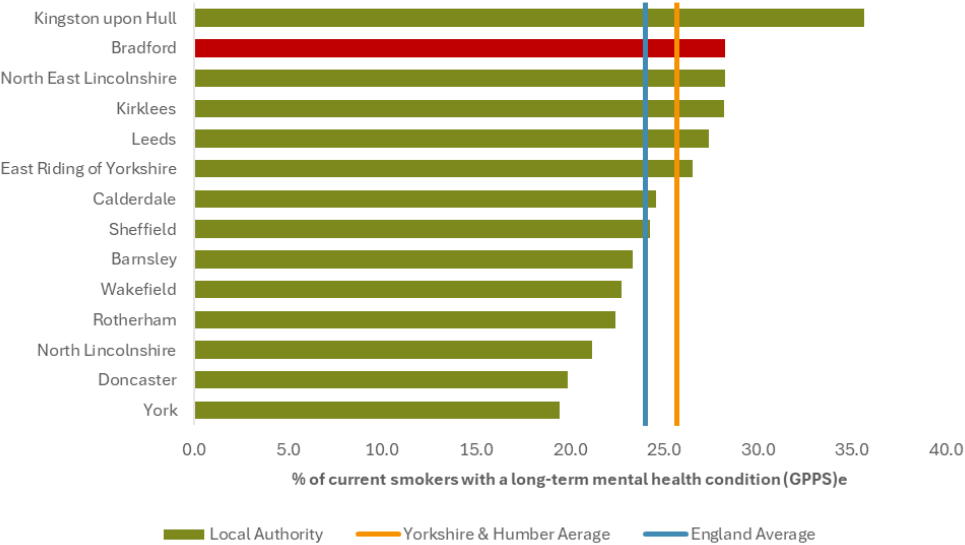
Smokers with Mental Health Conditions



Studies have shown that people with mental health conditions are more likely to smoke than the general public and that smoking rates increase with the severity of illness. In addition, studies have shown that those smoking more than 15 cigarettes a day are more likely to experience a common mental health disorder than those who smoke fewer cigarettes or do not smoke at all, and 40% of cigarettes smoked in England are smoked by people with a mental health problem (DHSC)



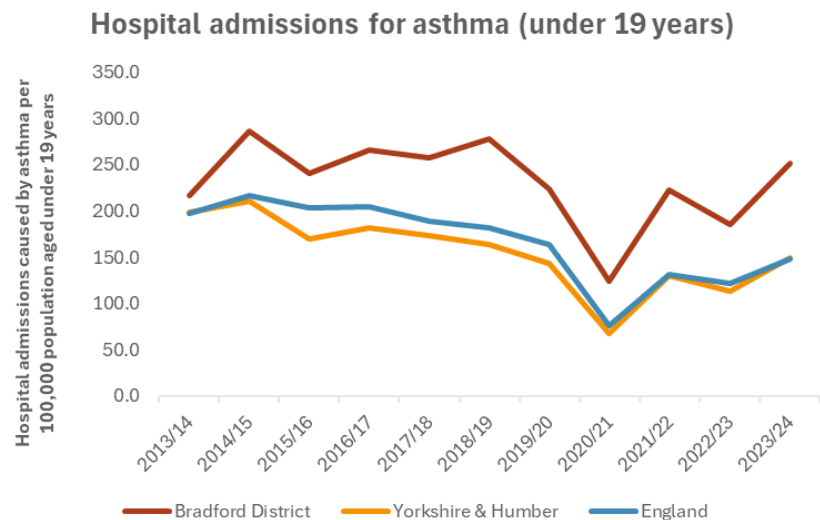
Smoking prevalence in adults with a long-term mental health condition (aged 18 and over) - current smokers (GPPS)



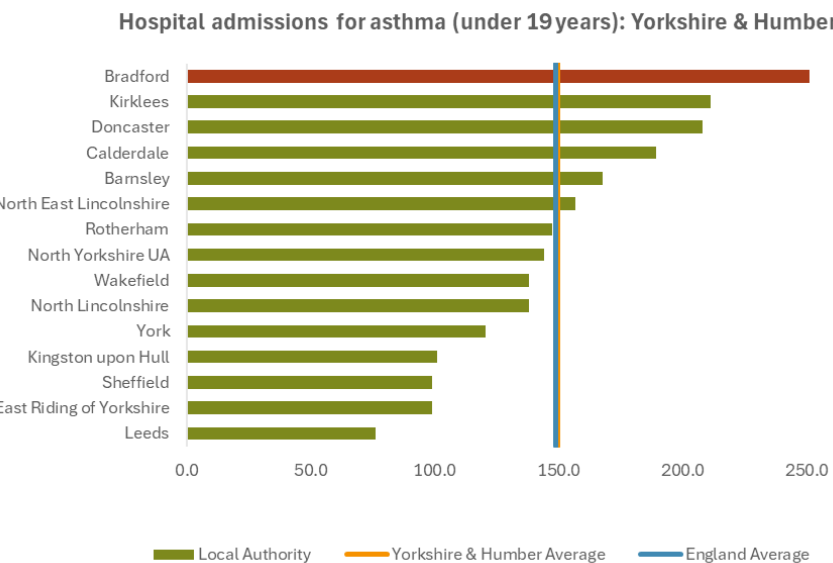
Bradford District has a **significantly higher** prevalence of smoking in adults with a long-term mental health condition in 2024/25 than both regional and national averages, with this accounting for 28.2% of smokers aged 18+ in the district. This is compared with Yorkshire & the Humber's 25.7% and England's 24%.

Bradford District has the **2nd highest** prevalence when compared with other local authorities in Yorkshire & the Humber and has the **highest** in West Yorkshire.

Hospital Admissions



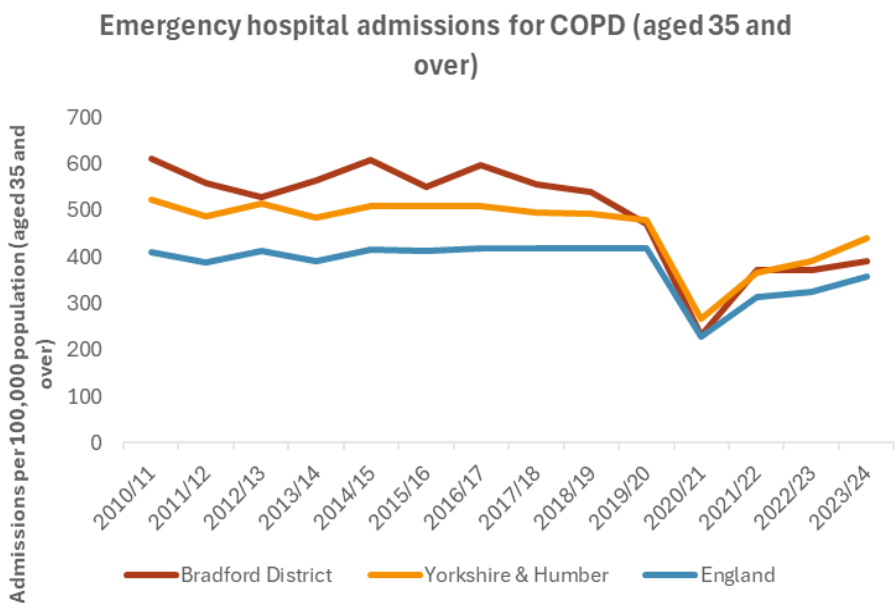
Bradford District has the **highest rate** of hospital admissions for asthma in under 19-year-olds in Yorkshire & Humber with a crude rate of 251.1 per 100,000 population of this age groups. This is **significantly higher** than the averages for Yorkshire & Humber (149.4 per 1000,000) and England (148.6 per 100,000).



Bradford District is ranked **12th highest** of 147 local authorities in England for hospital admissions for asthma in under 19-year-olds.

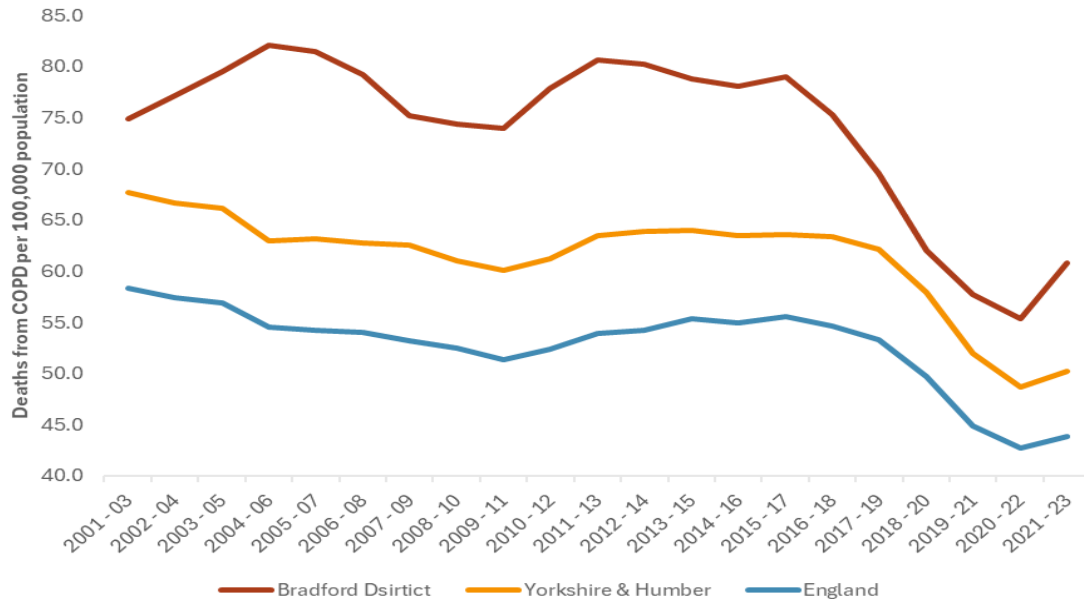
Emergency admissions for COPD in adults aged 35+ in Bradford District were **significantly worse** than England in 2023/24 with a directly standardised rate of 391 per 100,000 population of this age group compared with 357 per 100,000 for England.

Compared with other local authorities in Yorkshire & Humber, Bradford has the **5th lowest** rate but remains **significantly higher** than the national average and **lower than** the regional average (439 per 100,000).



Smoking Related Mortality

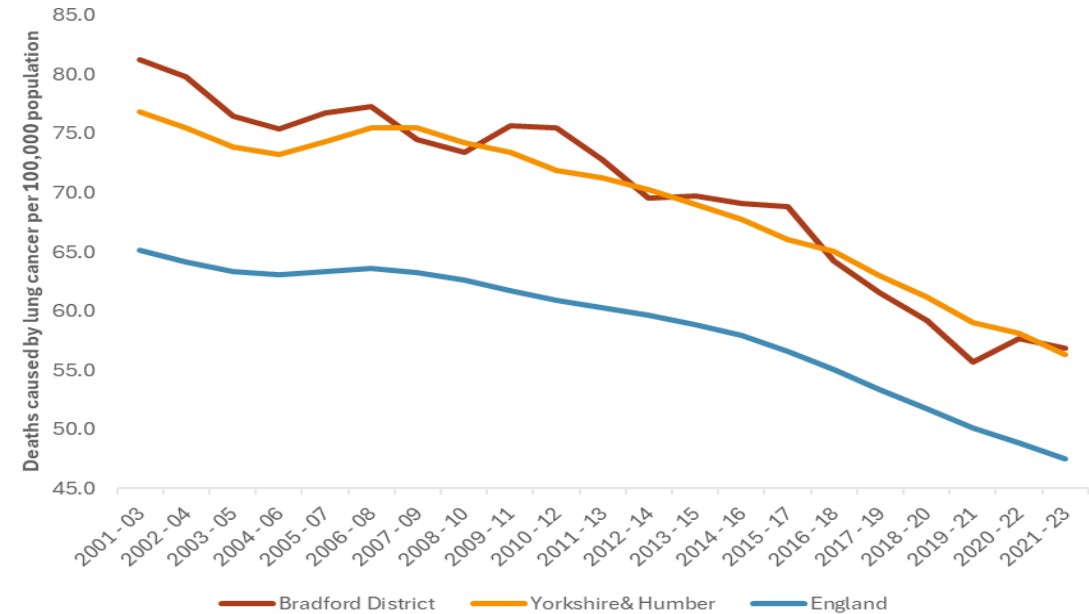
COPD



Mortality rate from COPD in Bradford District reached its lowest in 2020-22 after an initial decline in 2015-17. However, this increased again in 2021-23 at a faster rate than regional and national averages, with **5.6 per 100,000** population aged 35+. This is compared with **1.5 per 100,000** for Yorkshire & the Humber and **1.1 per 100,000** for England

Bradford District has **5th highest** rate of mortality from COPD in Yorkshire & Humber and **2nd highest** in West Yorkshire.

Lung Cancer

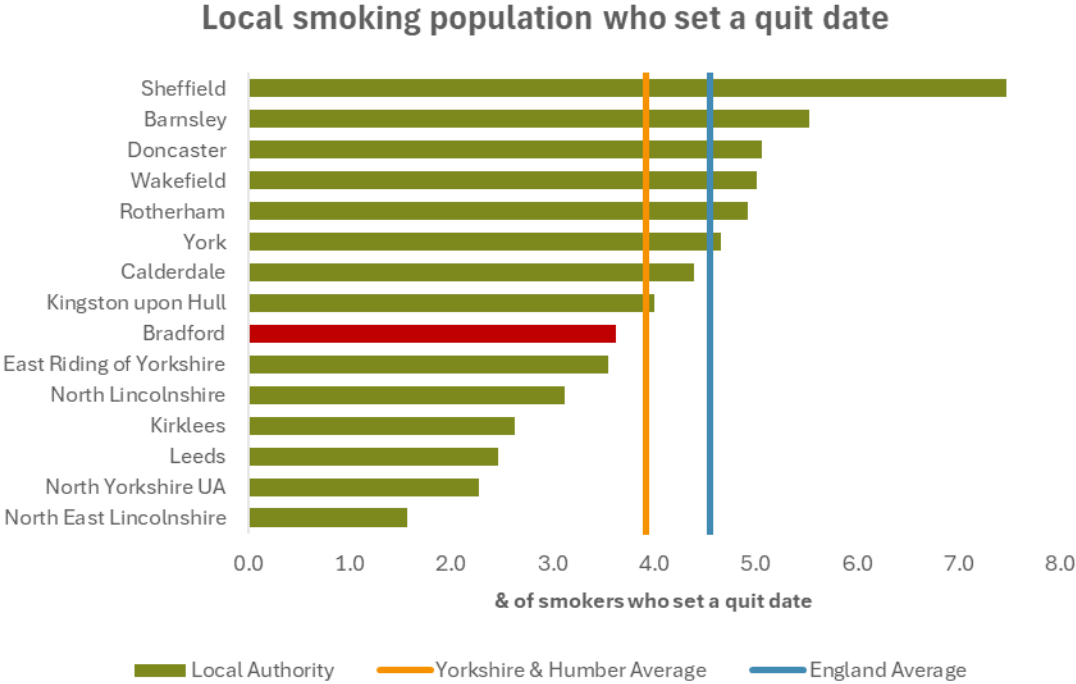


Mortality caused by lung cancer in Bradford District is **significantly worse** than the national average and is **similar to** the regional average.

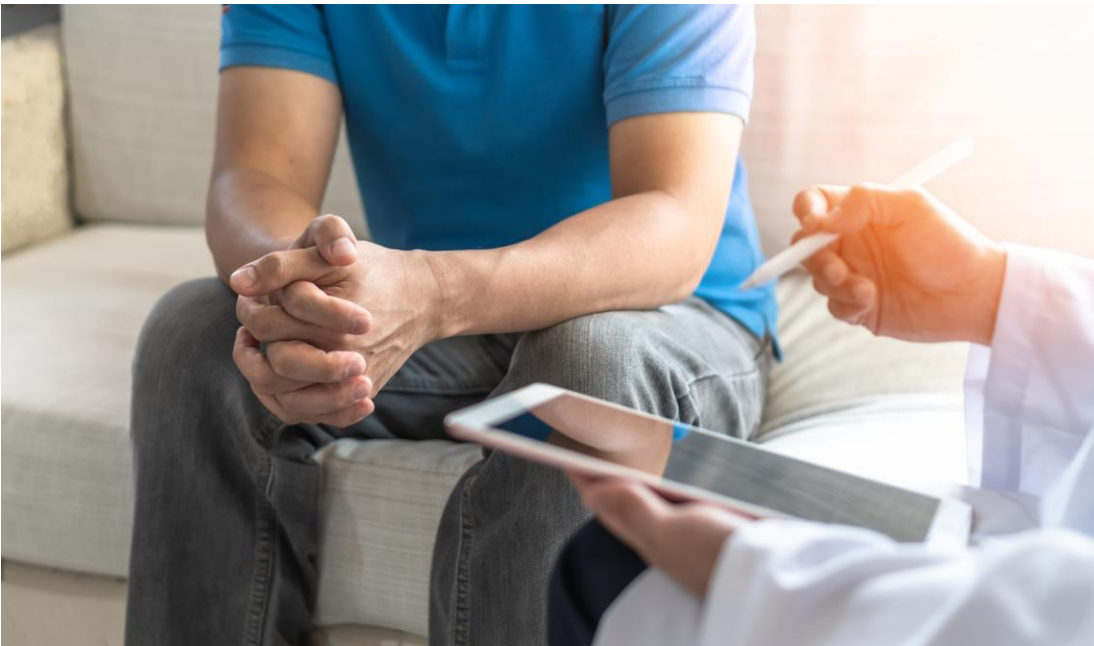
Data indicates that rates are falling at local, regional and national levels and although Bradford District experienced an increase in 2020-22, this has now started to decline.

Smokers Setting a Quit Date

Bradford District has the **7th lowest** proportion of smokers setting a quit date in Yorkshire & Humber with **3.6%** smokers aged 16+. This is significantly below both regional and national rates, with **3.9%** for Yorkshire & the Humber and **4.5%** for England.

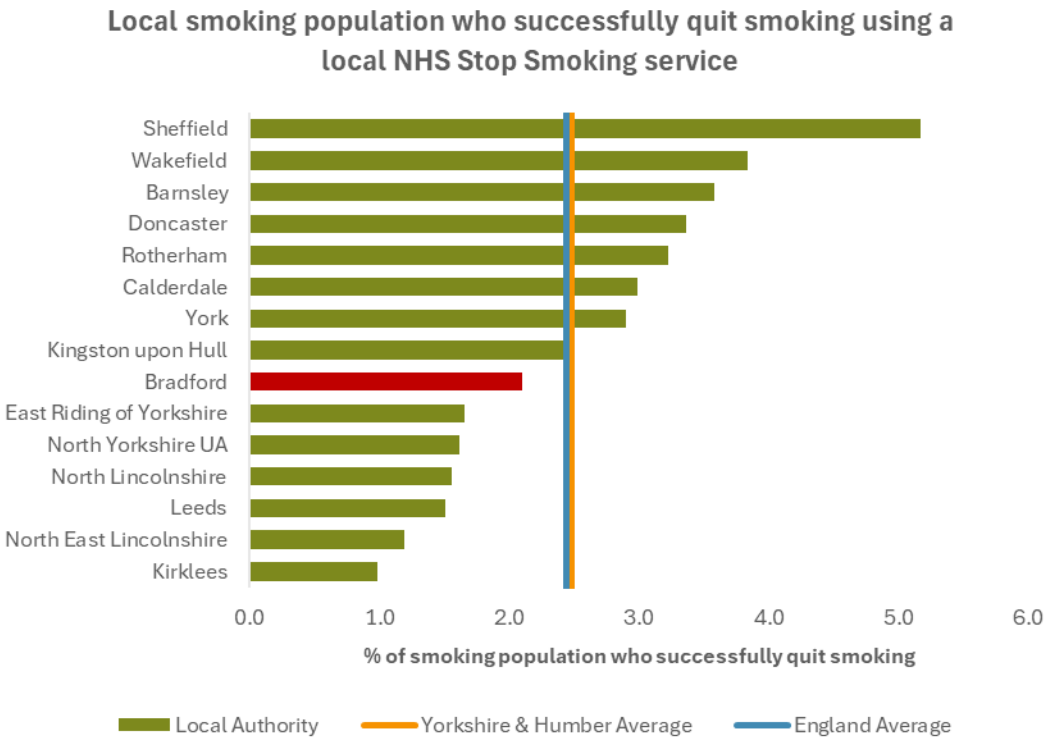
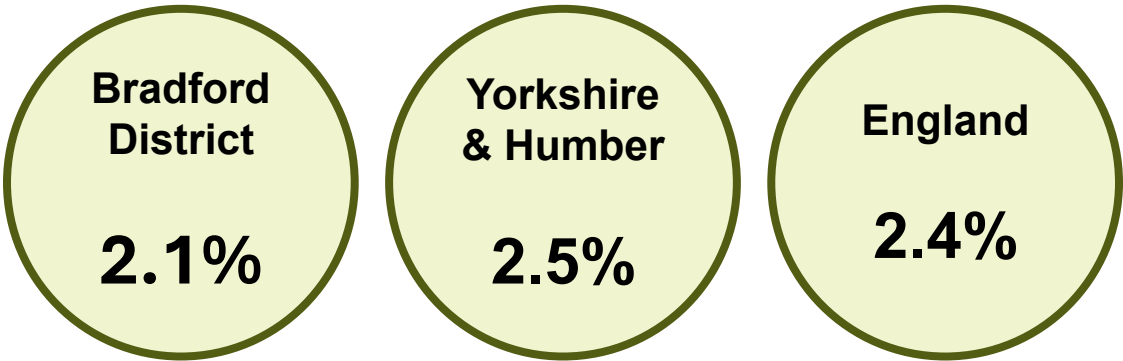


Successful Quitters

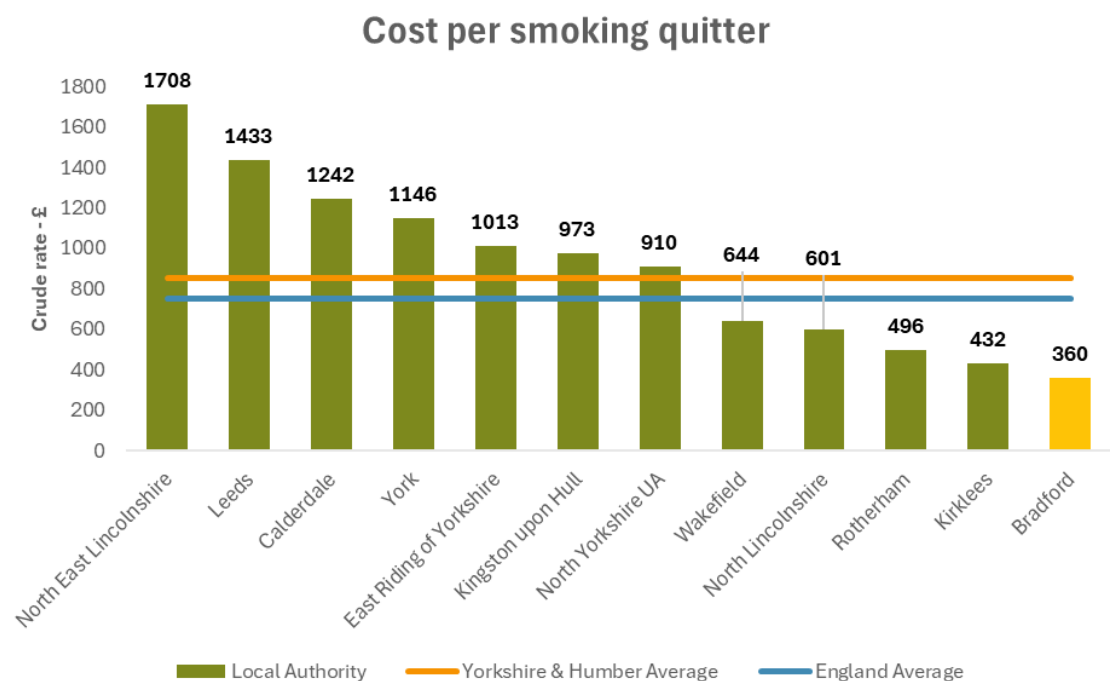


Data indicates that Bradford District is **significantly below** the regional and national averages for 2024/25 with **2.1%** of smokers aged 16+ quitting successfully using NHS Stop Smoking services..

Compared with other local authorities in Yorkshire & the Humber, Bradford District has the **7th lowest** rate and has the **3rd highest** in West Yorkshire.



Cost per Smoking Quitter



Bradford District's average cost per quitter* is **£360**. This is **significantly below** the averages for **Yorkshire & Humber (£853)** and **England (£749)** and is **the lowest** when compared to other local authorities in Yorkshire & Humber. However, it should be noted that there is no data for Barnsley, Doncaster or Sheffield for this indicator in 2024/25.

Bradford District is ranked 134th of 147 local authorities in England. This is one of the lowest in the country.



**LAs submit returns to NHS England for smoking services, which include the total number of people who successfully quit smoking and the total expenditure. The total expenditure is divided by the number of quitters to calculate an average cost per successful quitter (OHID)*