



Demographics of Bradford District

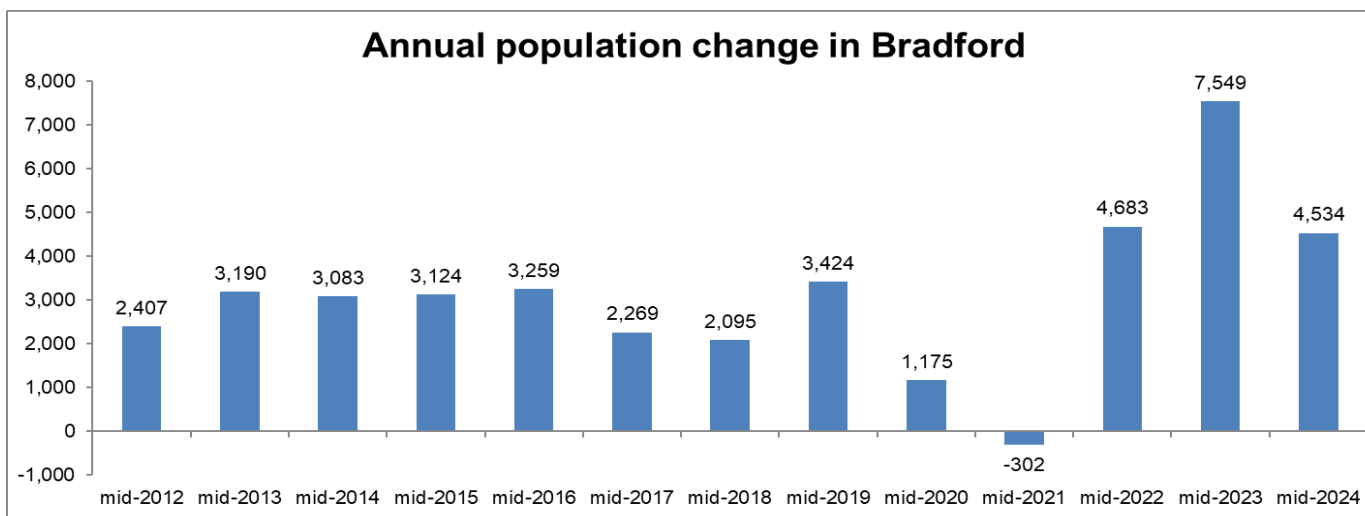
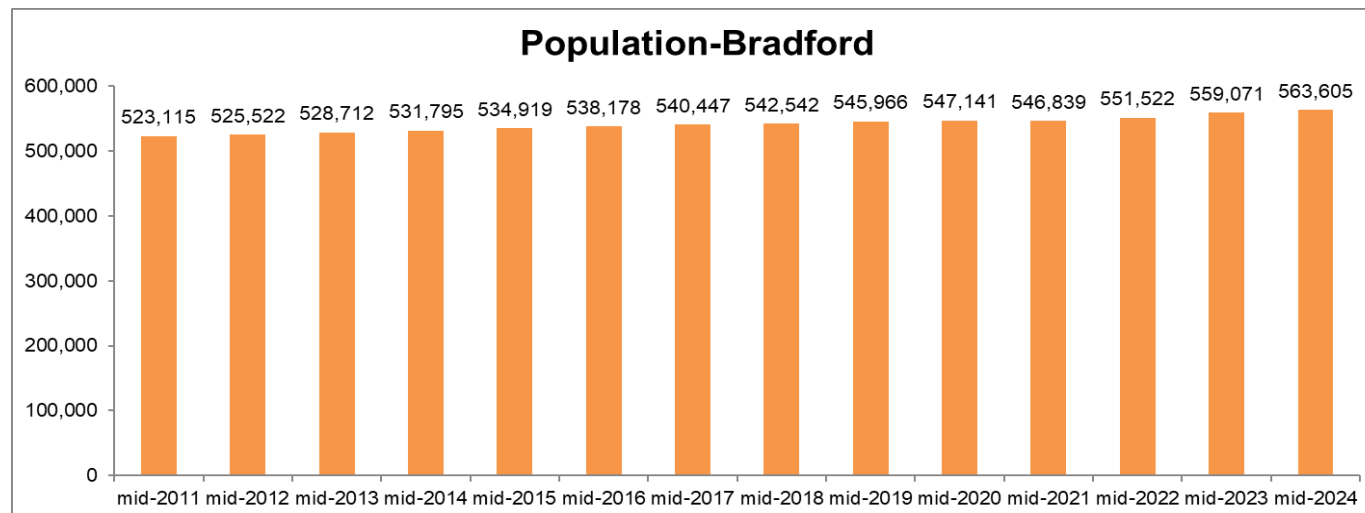
The Joint Strategic Needs Assessment (JSNA) provides information on the current and future health and wellbeing needs of people in Bradford District visit <https://jsna.bradford.gov.uk>

Public Health Intelligence Team



City of
BRADFORD
METROPOLITAN DISTRICT COUNCIL

The Population



Bradford is the fifth largest metropolitan borough (source: ONS mid-year population estimates, 2024) in England in terms of population size after Birmingham, Leeds, Manchester and Sheffield.

563,605 people are estimated to be living in Bradford District (mid-year estimates 2024) an increase of 4,534 (0.8%) people since the mid-2023 population estimates were published and 7.7% since 2011.

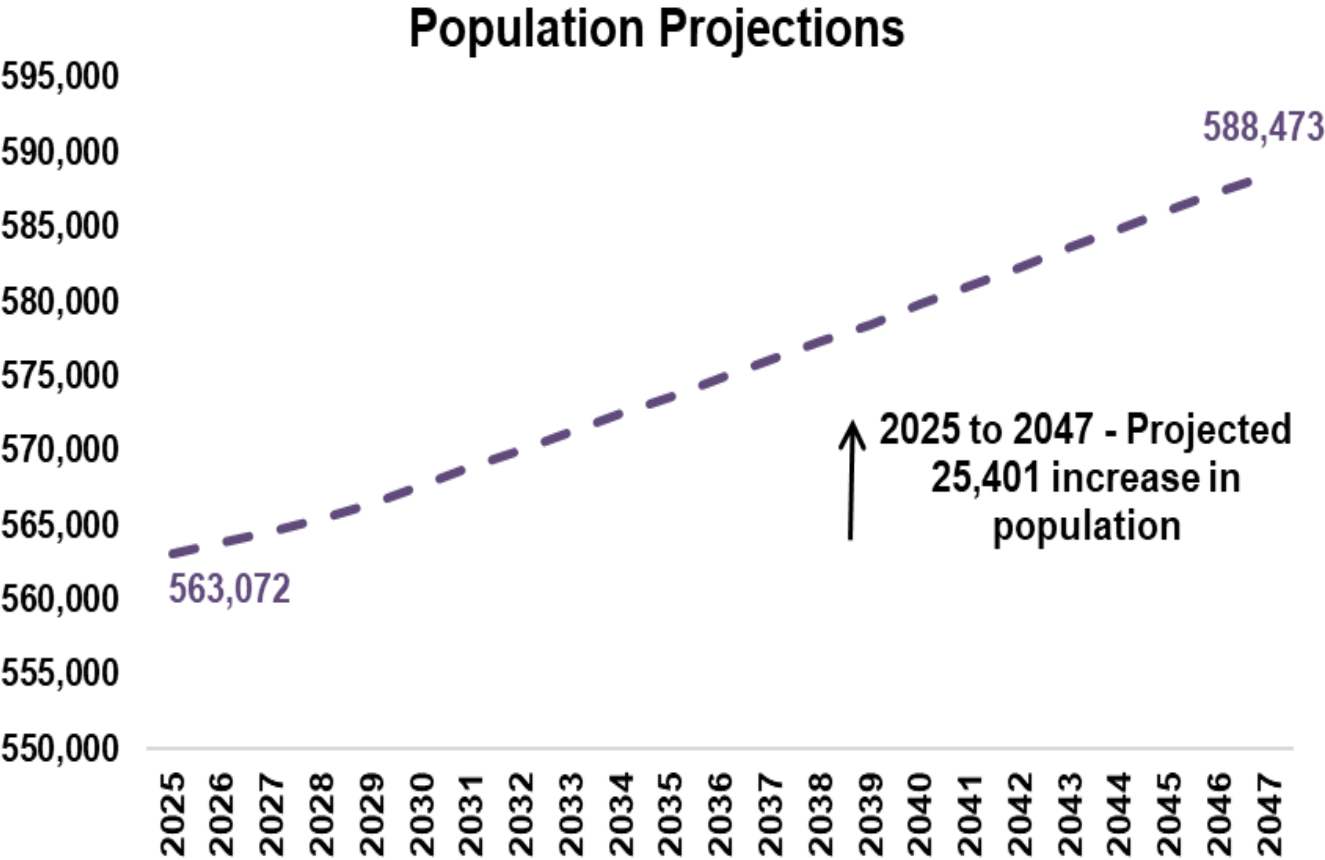
Bradford had the highest population density in West Yorkshire with 1,538 people per square kilometre, followed by Leeds with 1,532. Bradford is also higher compared to the region (368) and England (450).

Data and graphs source: Office for National Statistics – mid 2024 population estimates



Population Projections

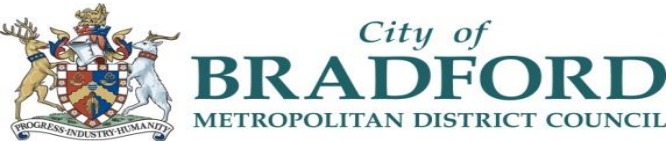
All ages

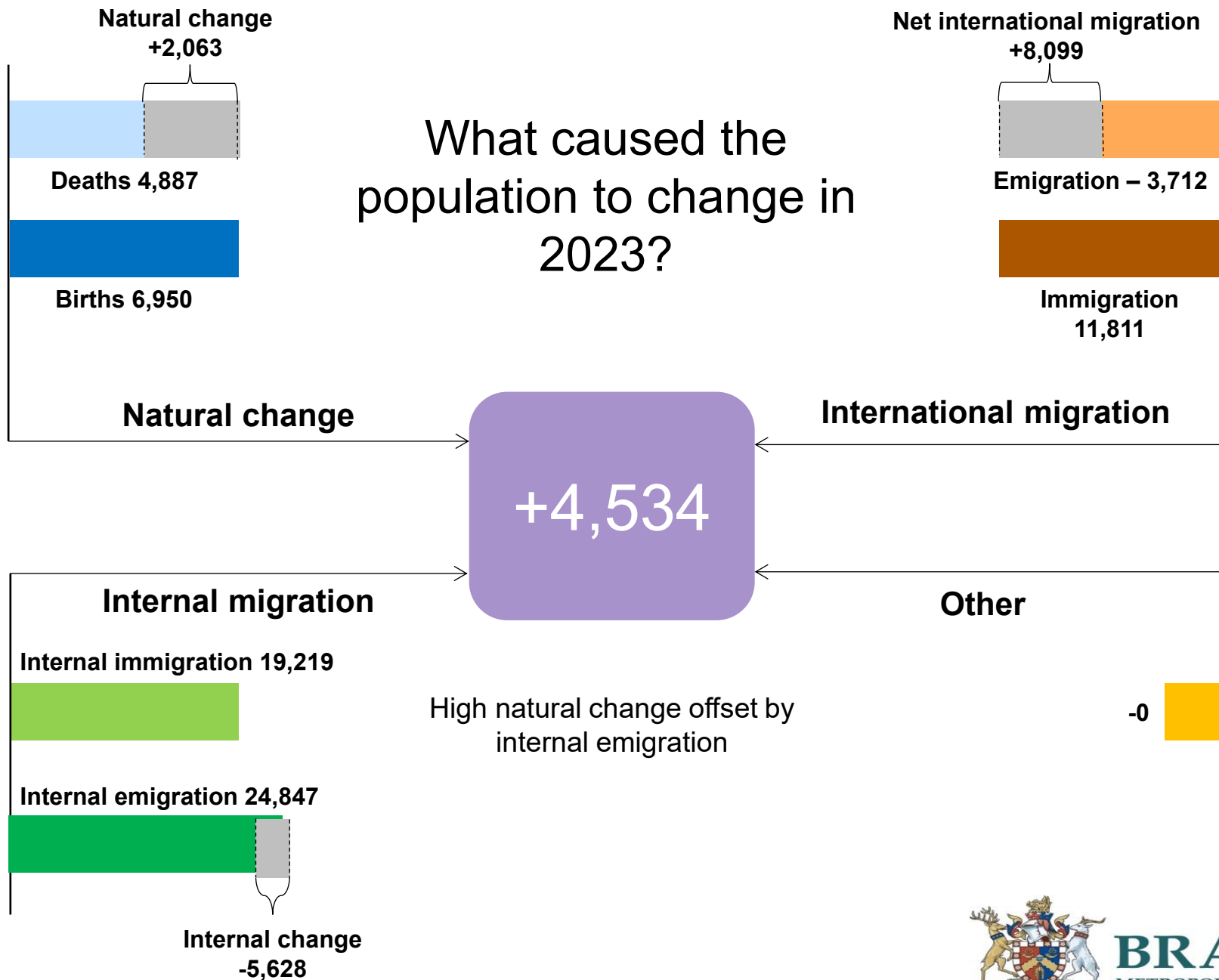


The Office of National Statistics publishes trend-based population projections for local authorities. This projects a resident population of an area includes all people who usually live there, regardless their nationality.

Population Projections for the district for 2025 are estimated to be 563,072 which increases year on year to 588,473 in 2047 and increase of 25,401 equivalent to 4.5%.

Data source: Office for National Statistics – Population projections for local authorities

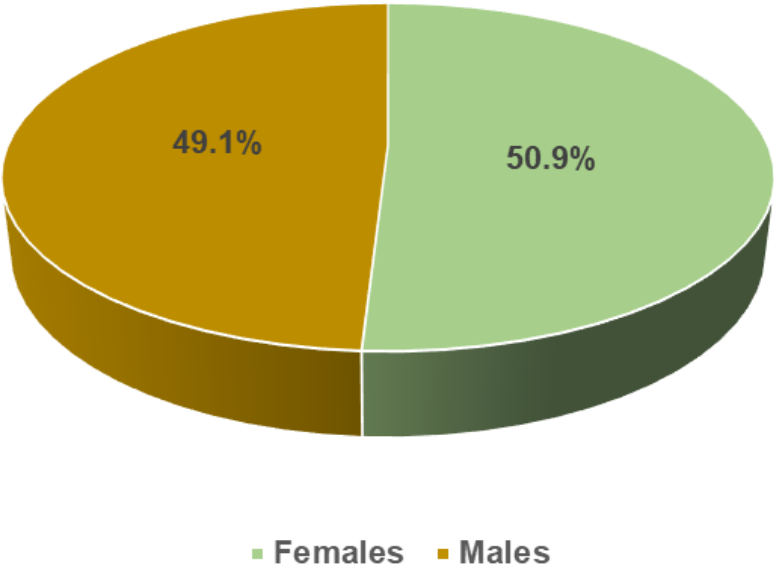




Data Source: Office for National Statistics

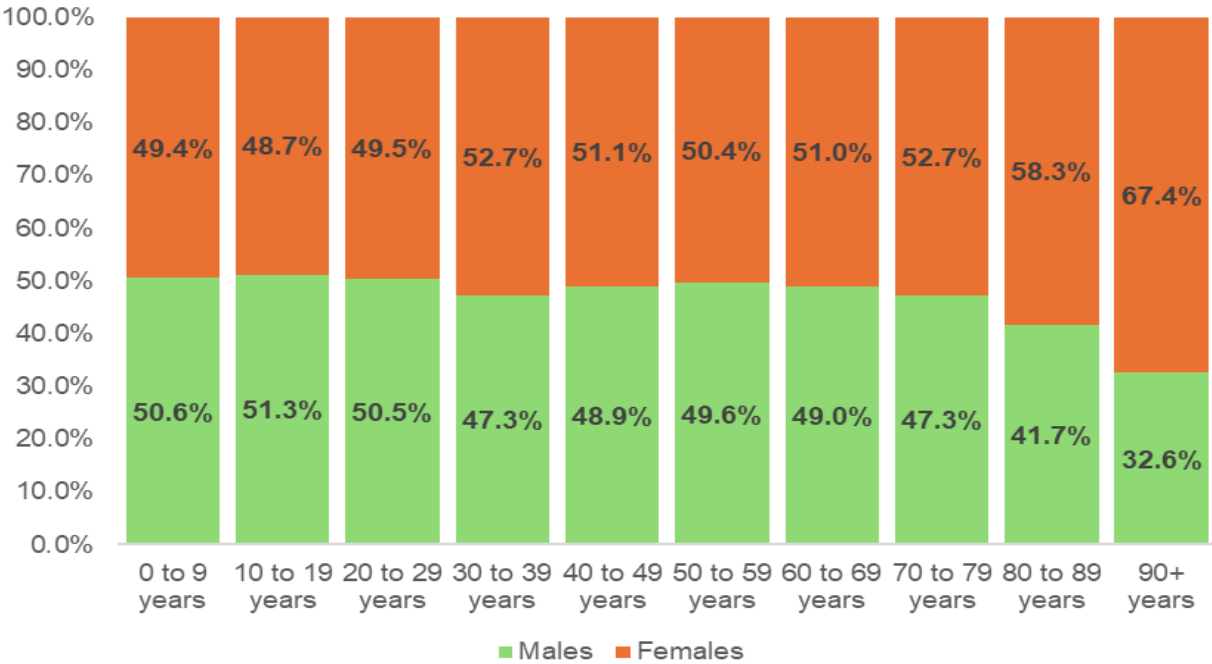
The Population

Gender split and age groups by gender



50.9% of the population in Bradford are female with 49.1% male (England 51% and 49%, respectively).

Between the ages of 0 to 29 years the district has a higher proportion of males this subsequently decreases from 30 years onwards. Females account for a third compared to males (67.4% female/32.6% male) for residents aged 90 plus years.



Data Source: Office for National Statistics



City of
BRADFORD
METROPOLITAN DISTRICT COUNCIL

The Population Age

Population Age Profile - Bradford - Mid 2024 population estimates



20.8% of the population are under 15-year-olds which is higher than Yorkshire and the Humber (17.2%) and England (17.2%)

Mid-year 2024 estimates show Bradford had a median (average) age of 36.9 years which is the same as mid 2023 estimates (36.8 mid 2022)

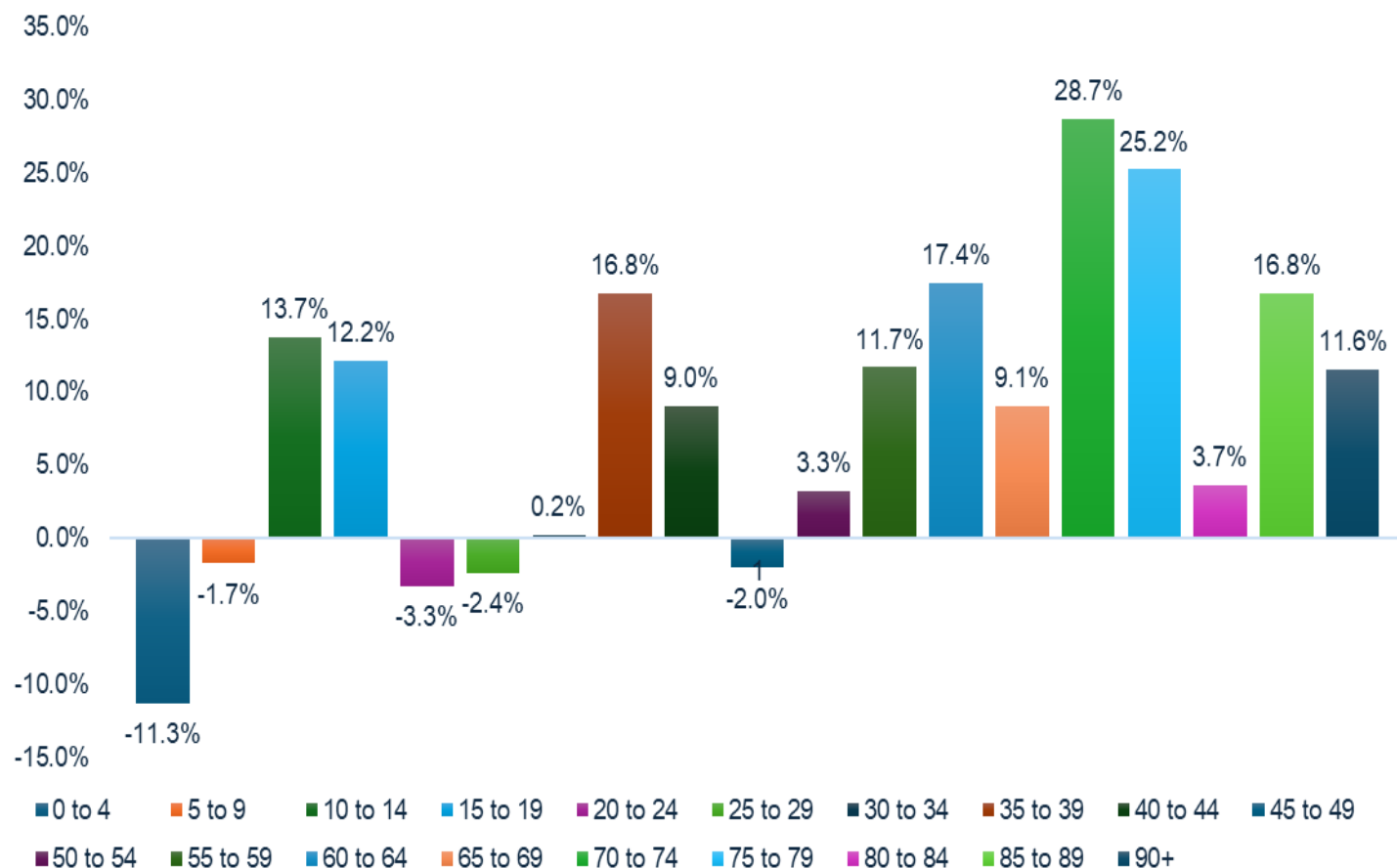
Bradford had the joint third lowest median age alongside Kingston Upon Hull in Yorkshire and Humber (behind Leeds 36.1 years and Sheffield 36.6 years) and a lower average (median) age than England (40.2 years) and Yorkshire and the Humber (40.3 years).

The median age range within Yorkshire and the Humber is 36.1 years to 49.6 years.

Data Source: Office for National Statistics

The Population

Population change (%) by age group in Bradford, 2014 to 2024



The number of residents aged 4 years and under fell by around 4,610 (11.3% decrease) with 5 to 9 years by a decrease of 1.7%

In people aged 10 to 14 there has been a 13.7% increase with a 12.2% increase in people 15 to 19 years.

People aged between 25 and 29 years have fallen by 2.4% with the number of people aged 35 to 39 years rising by 5,792 (an increase of 16.8%).

There has been an increase of 28.7% in people aged 70 to 74 followed by a 25.2% increase in people aged 75 to 79.

The number of people aged 90 years and over increased by 11.6%.

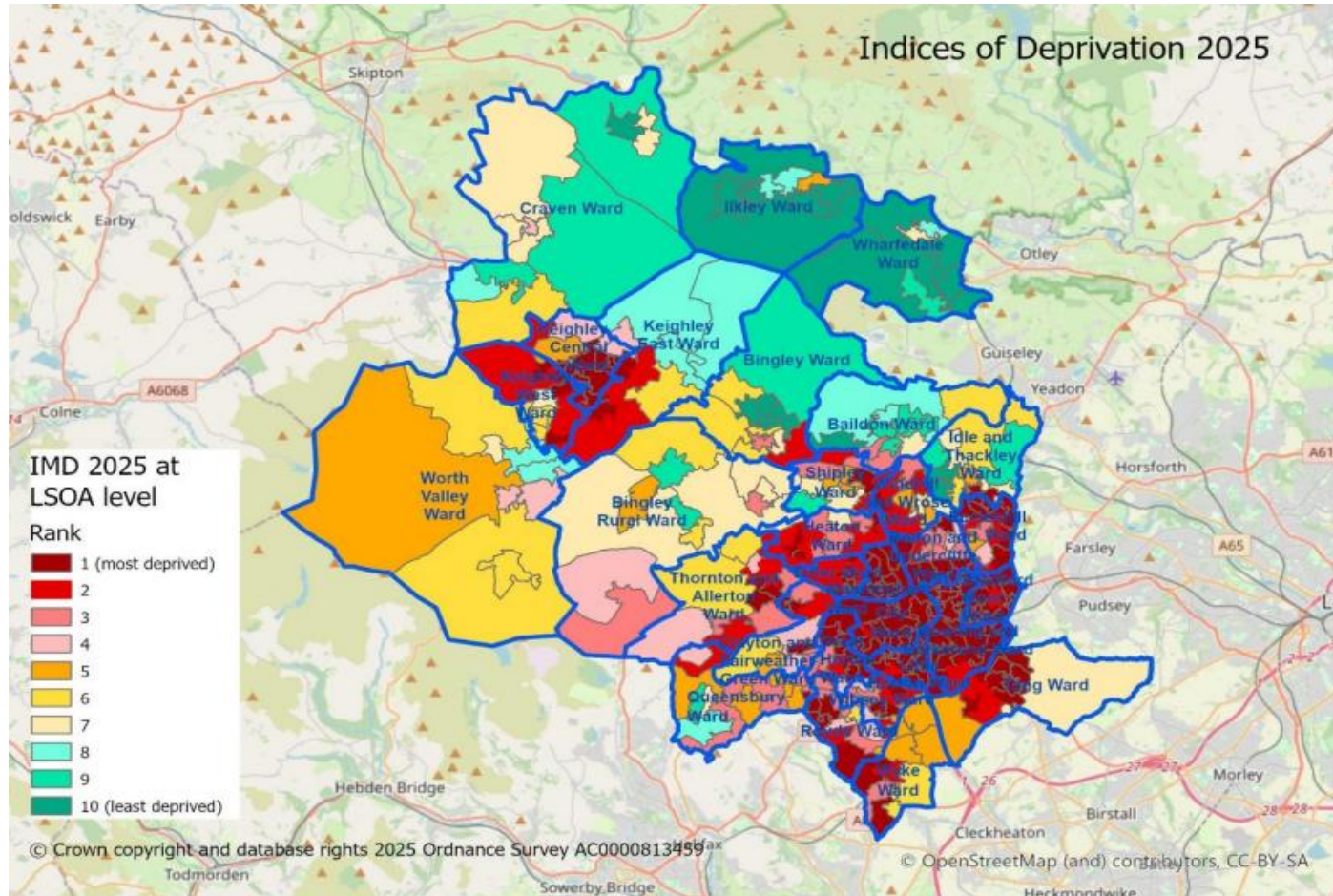
Data source: Office for National Statistics



City of
BRADFORD
METROPOLITAN DISTRICT COUNCIL

Deprivation

IMD Decile 2025



Bradford District is one of the most deprived local authorities in England and ranks **12th out of 296** Local Authority Districts.

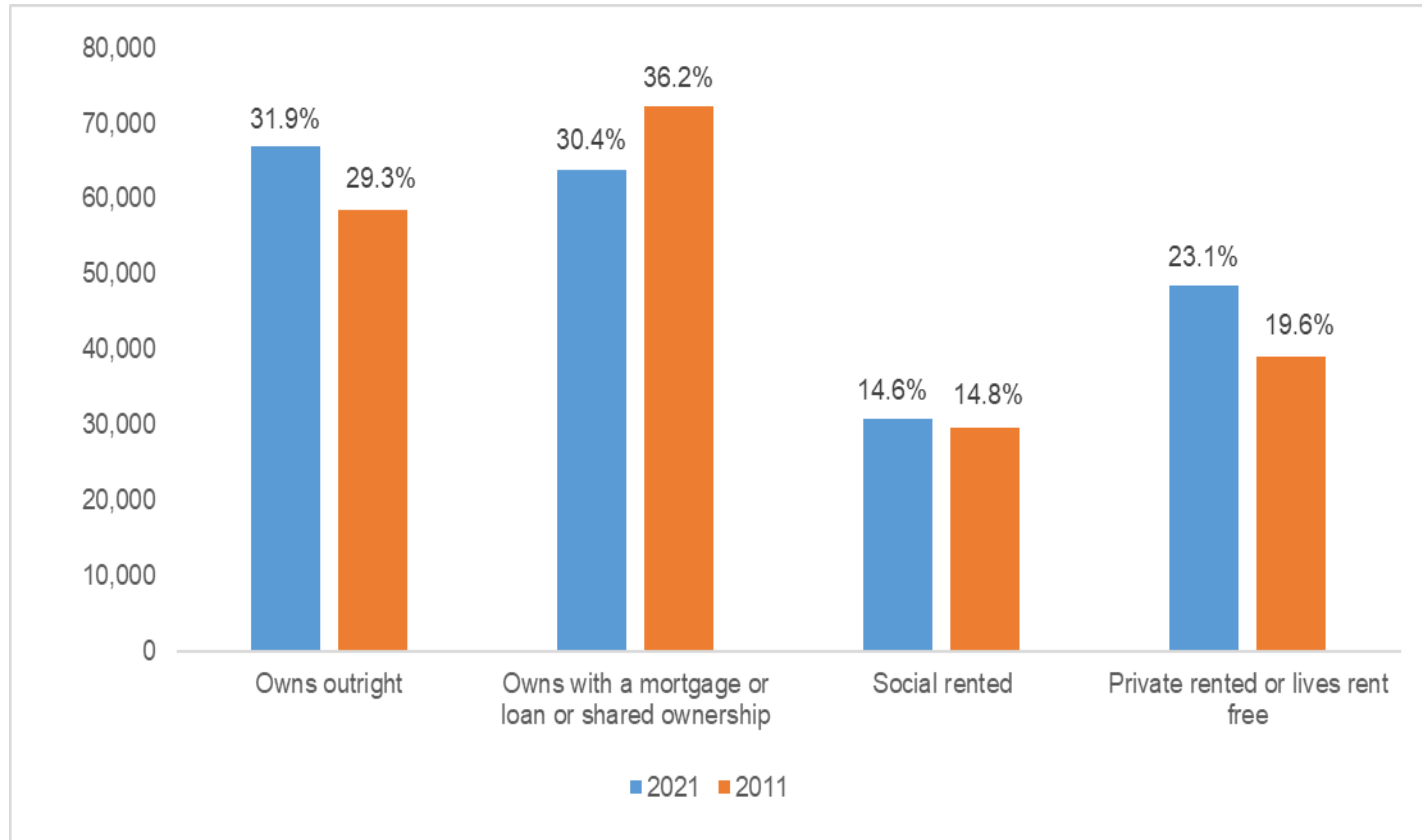
Bradford's position, relative to other local authorities has worsened in the last six years. In 2019 Bradford was ranked as 13th most deprived and in 2015 Bradford was ranked 19th most deprived.

Bradford has 115 LSOAs (an additional eleven since 2019) which fall within the 10% most deprived neighbourhoods in England and the 18 LSOAs which fall within the least deprived neighbourhoods (an additional two since 2019).

Slide data source: Department for Communities and Local Governments, 2025

Households

Tenure of households



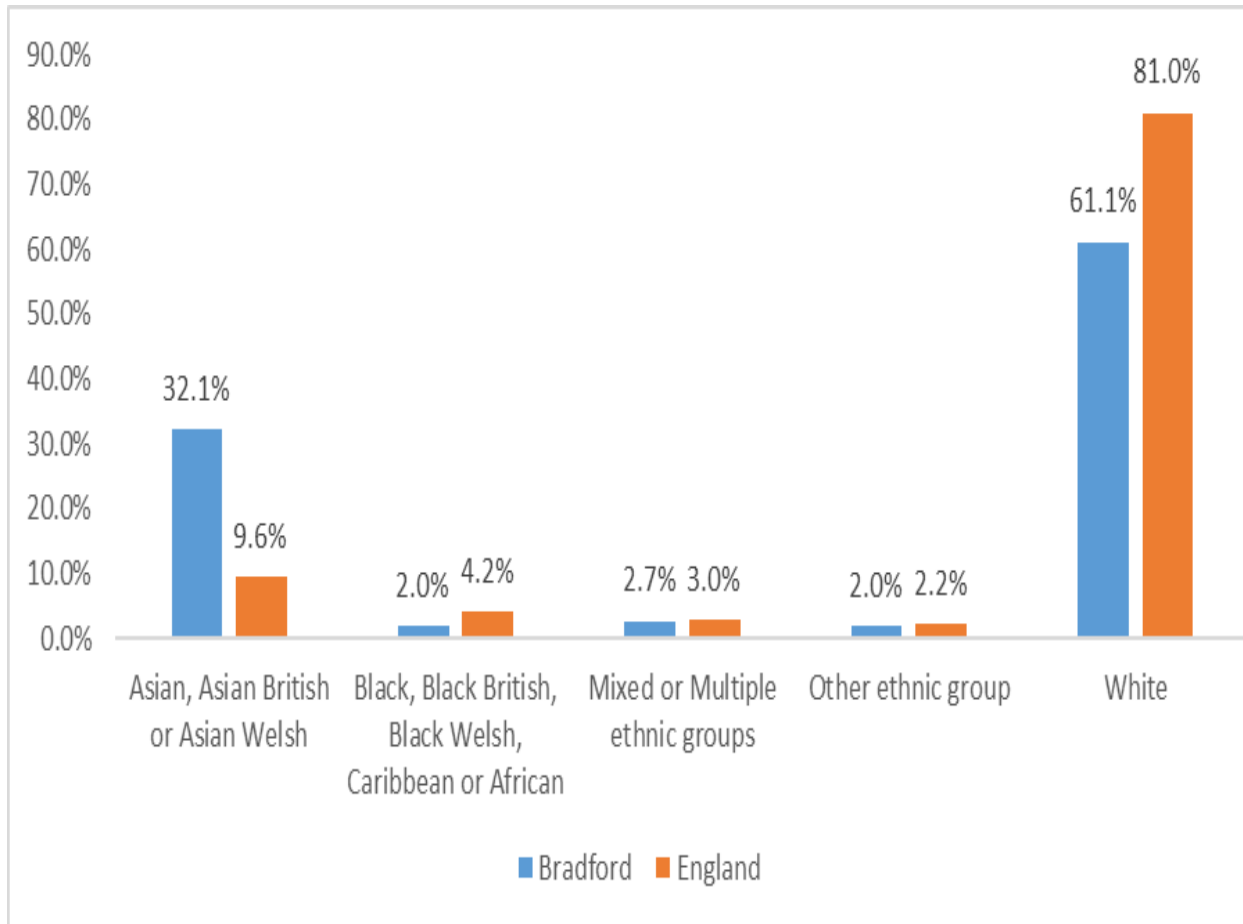
There are 216,813 households in the Bradford district. Most households own their own home (31.9% outright) this increased compared to 29.3% in 2011.

30.4% with a mortgage, loan or shared ownership). This increased has decreased compared to 36.2% in 2011.

The percentage of privately rented or lives rent free households is 23.1% which has increased from 19.6% in 2011.

Data and information source: Office for National Statistics – Census 2011 and 2021

Ethnicity



In 2021, 32.1% of Bradford residents identified their ethnic group within the "Asian, Asian British or Asian Welsh" category, up from 26.8% in 2011. The 5.3 percentage-point change was the largest increase among high-level ethnic groups in this area. For England this is 9.6%.

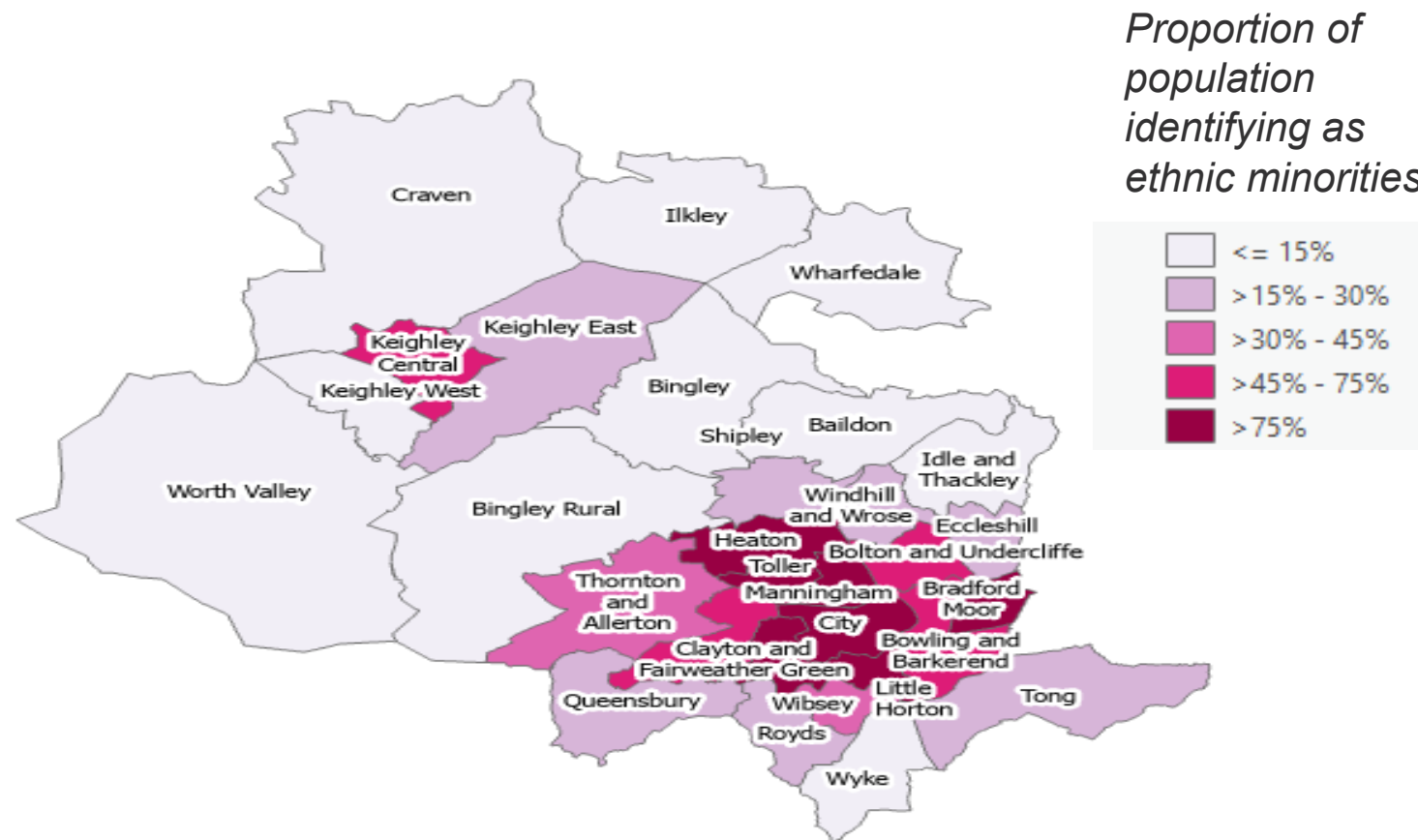
Bradford has the 2nd largest proportion of people of Asian, Asian British or Asian Welsh: Pakistani ethnicity after Pendle (25.6%).

In 2021, 61.1% of people in Bradford identified their ethnic group within the "White" category (compared with 67.4% in 2011), while 2.7% identified their ethnic group within the "Mixed or Multiple" category (compared with 2.5% in 2011). For England this is 81.% and 3% respectively. The percentage of people who identified their ethnic group within the "Other" category ("Arab" or "Any other ethnic group") increased from 1.5% in 2011 to 2.0% in 2021.

Data and information source: Office for National Statistics – Census 2021

Ethnicity

Proportion of population by ward identifying as ethnic minorities* by ward



3.8% of Bradford residents identified as ethnic minorities live in the City (Bradford) ward with 3.6% living in Bradford Moor ward and 3.6% Toller ward.

Whilst 0.1% live in Wharfedale ward and Worth Valley ward (0.1%)

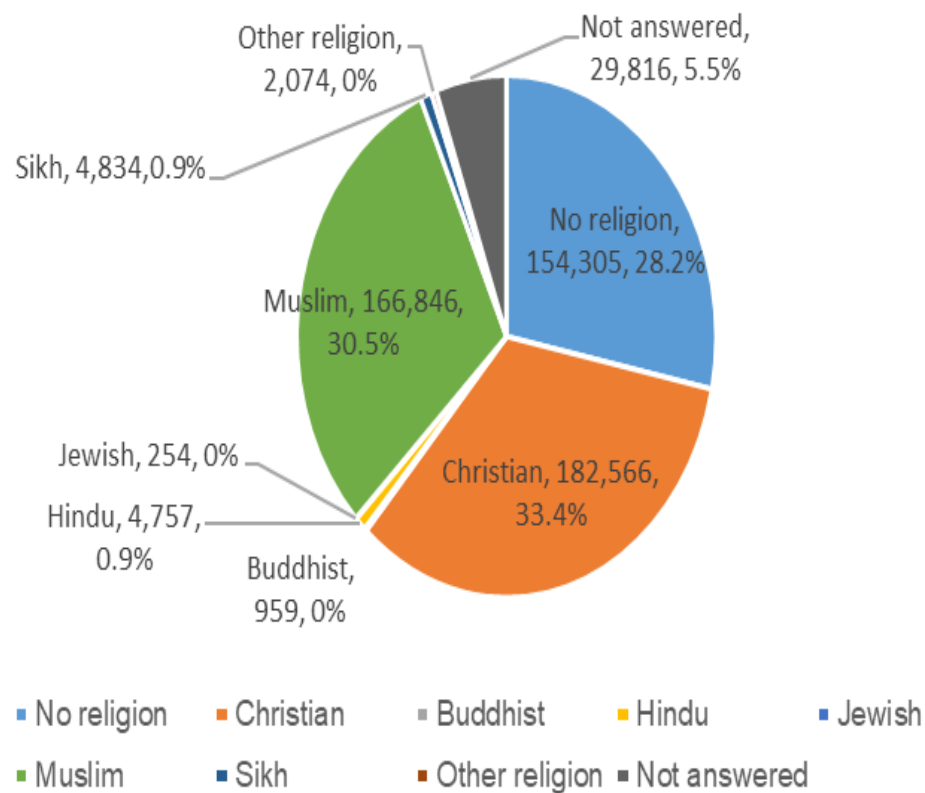
**'ethnic minorities' refers to all ethnic groups except white (English, Welsh, Scottish, Northern Irish or British and white Irish). Ethnic minorities include white: Gypsy, Roma and Irish Traveller groups and other white.*

Data Source: Office for National Statistics – Census 2021



City of
BRADFORD
METROPOLITAN DISTRICT COUNCIL

Religion



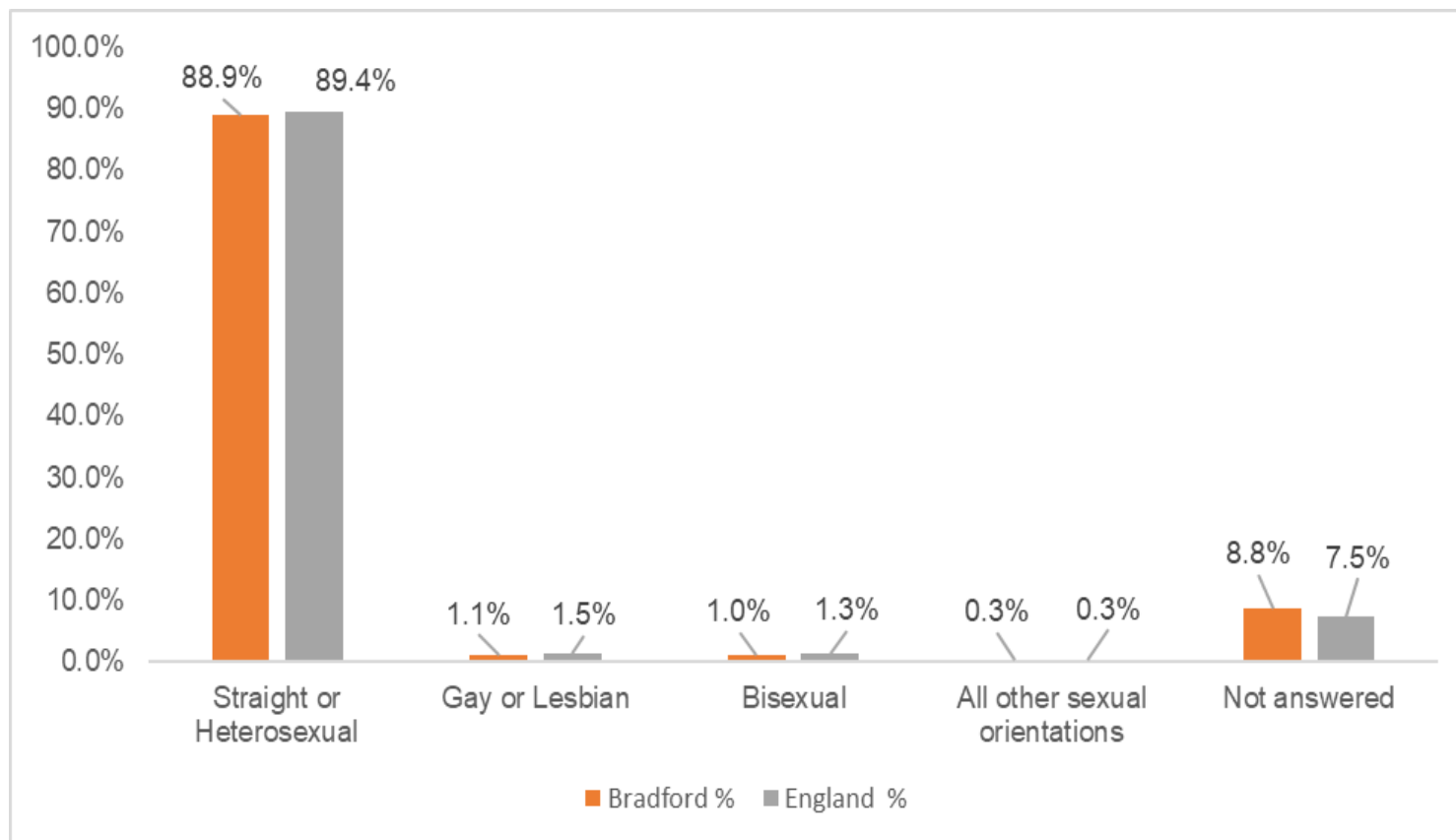
28.2% of Bradford residents reported having "No religion", up from 20.7% in 2011. The rise of 7.6 percentage points was the largest increase of all broad religious groups in Bradford. Across England the percentage increased from 24.8% to 36.7%.

In 2021, 33.4% of people in Bradford described themselves as Christian (down from 45.9%), while 30.5% described themselves as Muslim (up from 24.7% compared to 2011).

Data/Information Source: Office for National Statistics – 2011 Census and Census 2021

Sexual Orientation

Sexual orientation of all usual residents aged 16 and over*



In Bradford, 374,590 (88.9% of the population aged 16 years and over) identified as straight or heterosexual compared to 89.4% in England.

4,545 (1.1%) described themselves as gay or lesbian which is lower than 1.5% for England.

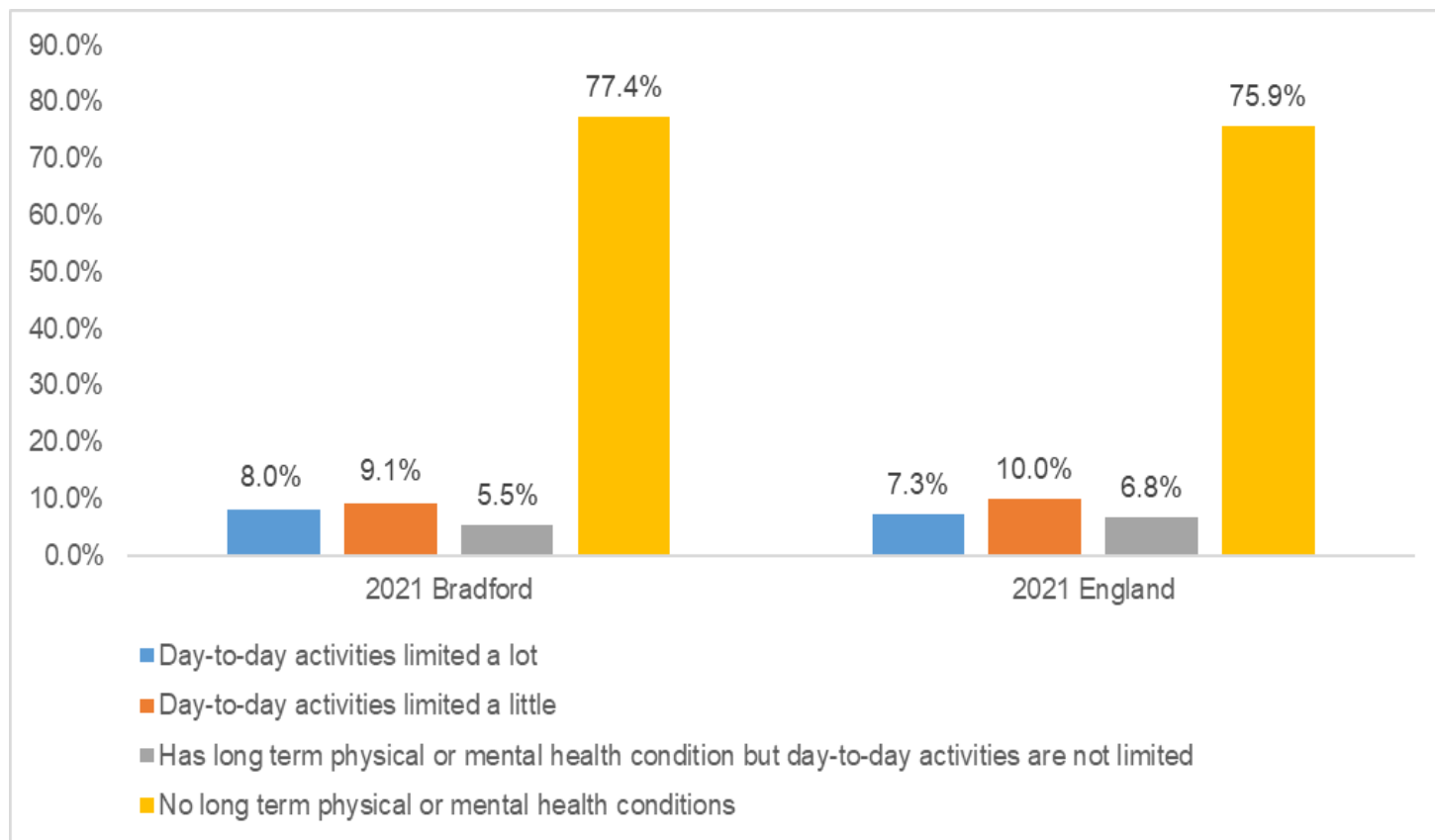
4,261 (1.0%) described themselves as bisexual and 1260 (0.3%) all other sexual orientations.

36,918 (8.8%) did not answer compared to 7.5% for England.

Data and information source: Office for National Statistics – Census 2021

Disability

Long-term health condition or illness of usual residents



The district has a higher proportion of residents (77.4%) with no long term physical or mental health conditions and those with day to day activities limited a lot (8.0%) compared to England (75.9% and 7.3% respectively).

Data and information Source: NOMIS – Census 2021