



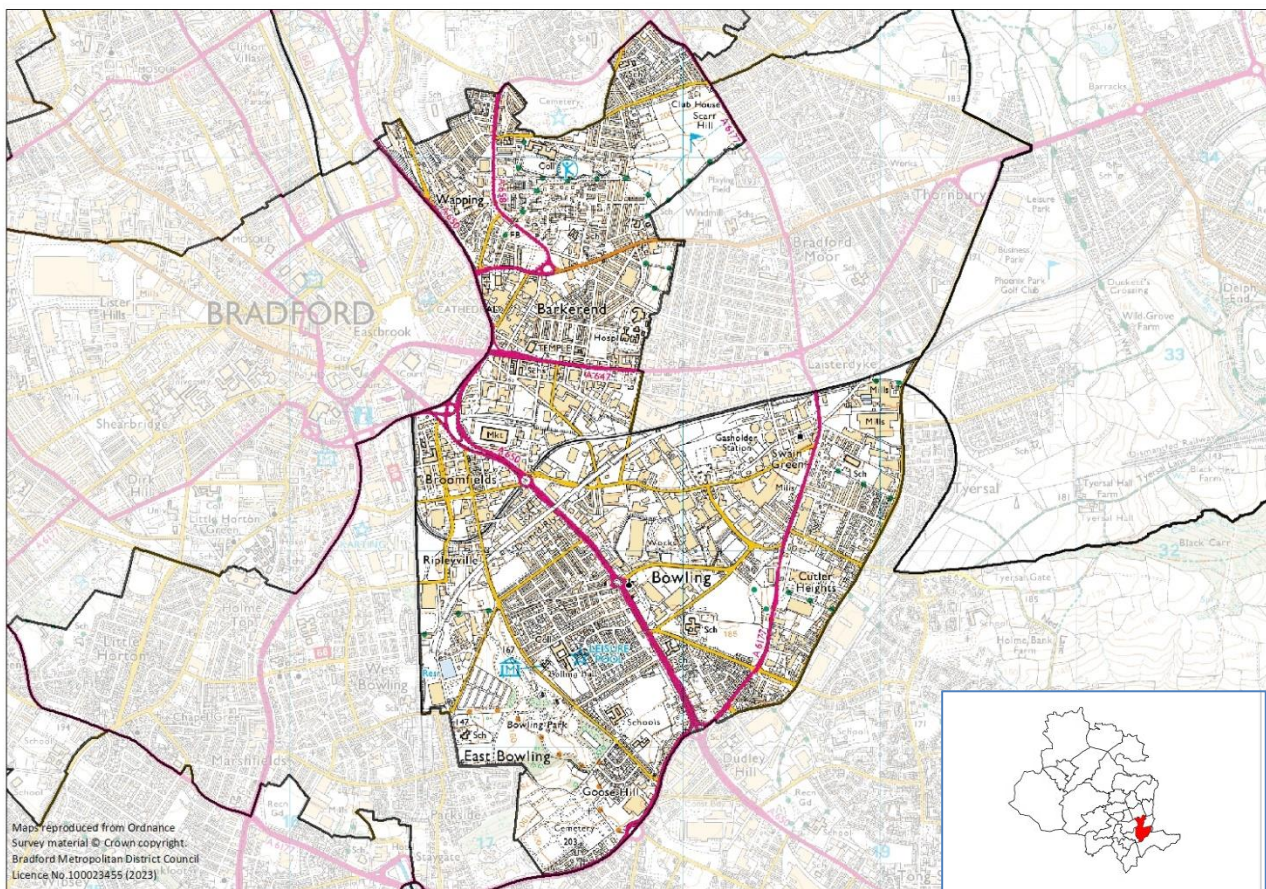
Ward Profile – Bowling and Barkerend

At a glance:

- Bowling and Barkerend has a total population of 22,760 people
- 27.9% of the population is under-16
- 39.9% of people living in Bowling and Barkerend identified as Pakistani ethnicity
- 48.3% of households live in terraced housing
- 78.6% of residents described their health as very good or good
- Bowling and Barkerend is ranked 3rd of 30 wards in the District for the 2019 Index of Multiple Deprivation where 1 is the most deprived (Manningham ward) and 30 is the least deprived (Wharfedale).

Introduction

Bowling & Barkerend ward is one of six wards in the Bradford East area. The ward covers the area to the south east of Bradford City Centre and contains a mixture of housing and industrial areas.



Map reproduced from Ordnance Survey material © Crown copyright. Bradford Metropolitan District Council Licence No. 100023455 (2023)

Population

The 2021 census results show that 22,760 people live in Bowling and Barkerend. 27.9% of the population is under 16. Craven has the lowest percentage of people under 16 in the District (15.8%) and Little Horton has the highest percentage (30.7%).

63.5% of the ward's population is aged between 16 and 64. Ilkley has the lowest percentage of the working age population with 54.1% and City has the highest percentage with 71.3% - this probably reflects the high numbers of students and young people living in the areas close to Bradford College and Bradford University.

7.6% of the population of Bowling and Barkerend is aged 65 to 84. City has the lowest percentage with 5.5% and Ilkley has the highest percentage with 23.7%.

0.9% of Bowling and Barkerend's population is aged 85 and over. Little Horton has the lowest percentage with 0.7% and Ilkley ward has the highest percentage with 6.1%.

Population density

Bowling and Barkerend has a population density of 3,779 people per square kilometre. Toller has the highest population density with 9,288 people per sq km and Worth Valley has the lowest population density with 238 people per sq km.

Bradford District has the highest population density in West Yorkshire with 1,491 people per square kilometre

Ethnicity and religion

Ethnicity	Percentage
White	35.0%
Multiple/mixed ethnic groups	3.6%
Indian	3.5%
Pakistani	39.9%
Bangladeshi	8.1%
Other Asian	2.9%
Black	3.6%
Other ethnic group	3.4%

Toller has the lowest percentage of the White population (10.6%) and the highest percentage of the Pakistani population (75.3%). Worth Valley has the highest percentage of the White population (97.3%) and the lowest percentage of the Pakistani population (0.2%).

61.1% of the Bradford District population identified as White, 25.5% identified as Pakistani, 2.7% identified as Mixed, 2.6% identified as Indian, 2.3% identified as Bangladeshi and 2% identified as Black

Religion	Percentage
Christian	21.5%
Buddhist	0.1%
Hindu	0.8%
Jewish	0.0%
Muslim	53.4%
Sikh	2.0%
Other religion	0.2%
No religion	16.4%
Religion not stated	5.5%

The question about religion in the 2021 census was voluntary and 5.5% of the Bowling and Barkerend population chose not to answer.

Bradford Moor has the lowest percentage of Christians (8.6%) and Wharfedale has the highest

percentage (53.2%). Worth Valley has the lowest percentage of Muslims (0.3%) and Toller has the highest percentage (80.1%).

Toller has the lowest percentage of people who do not have a religion (4.2%) and Worth Valley has the highest percentage (44.7%).

33.4% of the Bradford District population identified as Christian, 30.5% identified as Muslim. 28.2% of people stated that they had no religion and 5.5% chose not to answer the question, which was voluntary

Household language

64.3% of Bowling and Barkerend households have adults who all speak English as their main language, 17.1% of households have at least one adult who speaks English, 4.5% have one child aged 3 to 15, but no adults who speak English and 14.1% of households have no one with English as a main language.

83.1% of households in Bradford District have adults who all speak English as their main language, 8.9% have at least one adult who speaks English, 1.8% have at least one child aged 3 to 15, but no adults who speak English and 6.1% of households have no one with English as their main language.

Housing

There are 7,714 households in Bowling and Barkerend. 48.3% of households live in terraced housing, 22.3% of the households live in semi-detached houses or bungalows, 19.4% live in flats and 5.8% of households live in detached houses.

City has the lowest percentages of detached and semi-detached homes Baildon has the lowest percentages of terraced homes. Worth Valley has the lowest percentages of flats.

City has the highest percentages of flats. Wharfedale has the highest percentage of detached properties, Eccleshill has the highest percentage of semi-detached homes and Bradford Moor has the highest percentage of terraced properties.

There are 209,867 households in Bradford District. 36.7% of households live in semi-detached houses or bungalows, 33% live in terraced housing, 14.7% live in detached houses or bungalows and 11.6% live in flats or tenements.

42.3% of Bowling and Barkerend households live in owner-occupied housing, 33.1% of households rent from a private landlord and 24.5% are rented from a social landlord.

Wharfedale has the highest percentage of owner-occupiers (83.2%). City has the highest percentage of households renting from private landlords (54.3%) and Tong has the highest percentage of households renting from social landlords (34.7%).

62.2% of Bradford households live in owner-occupied homes (homes (either owned outright, with a mortgage or shared ownership), 23% rent from a private landlord and 14.6% rent from a social landlord.

10% of households in Bowling and Barkerend are living in overcrowded homes, this is higher than the District average of 5.5%. Wharfedale ward had the lowest rate at 0.6% and Manningham had the highest rate at 17.2%

Employment

The top three industries employing people living in Bowling and Barkerend are: retail and wholesale trade (22.2%) human health and social work activities (13.7%), and manufacturing (9.7%).

19.5% of employees in Bowling and Barkerend work in elementary occupations, 13.9% are process, plant and machinery operatives and 11.4% work in caring and leisure services.

The top three industries employing people living in Bradford District are: retail and wholesale trade (17.7%), human health and social work activities (15.4%) and education (10.6%)

17.1% of employees in Bradford District work in professional occupations, 12% work in elementary occupations and 11.5% work in associate professional and technical occupations.

Health and disability

The 2021 census asked people about their health, whether they have any disabilities and if they act as unpaid carers for anyone else.

In Bowling and Barkerend, 78.6% described their health as 'Good or very good' and 7.3% described their health as 'Bad or very bad'. Wharfedale had the highest percentage of people who described their health as 'Good or very good' (86.8%). Manningham and Tong wards had the joint highest percentage of people who described their health as 'Bad or very bad' (7.6%).

80.6% of Bradford District residents described their health as 'Good or very good' and 6% described their health as 'Bad or very bad'

The census asked people whether they had any physical or mental health conditions or illnesses lasting or expected to last 12 months or more. It also asked whether any of these conditions or illnesses reduced the respondent's ability to carry out day-to-day activities.

In Bowling and Barkerend, 83.1% responded that they do not have any illnesses or disabilities which limit their day-to-day activities. 8.7% consider that their activities are limited a lot and 8.2% feel that their activities are limited a little. Wharfedale had the highest percentage of people who do not have any illnesses or disabilities which limit their day-to-day activities (86.5%). Tong has the highest percentage of people who consider that their activities are limited a lot (10%) and Wyke has the highest percentage who feel that their activities are limited a little (11.6%).

82.9% of Bradford District residents do not have any illnesses or disabilities which limit their day to day activities, 8% find their activities are limited a lot and 9.1% find their activities are limited a little.

The Census took place during the coronavirus (Covid 19) pandemic. This may have influenced how people perceived and rated their health and therefore may have affected how people chose to respond.

Unpaid care

The census asked people whether they look after or give any help or support to anyone with a long-term physical or mental health conditions, or any problems relating to old age.

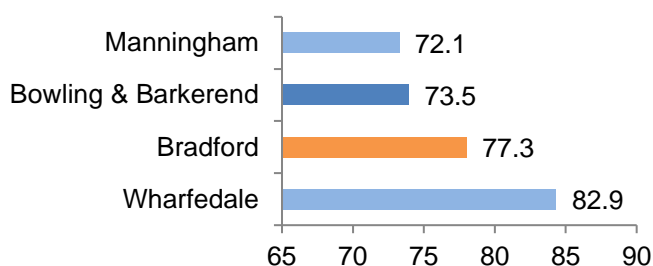
In Bowling and Barkerend, 91.4% do not provide any unpaid care, 3.1% provide 19 hours or less per week and 2.9% provided more than 50 hours per week. Residents in City ward were least likely to provide unpaid care (93.1%), whereas at the other end of the scale 5.6% of Baildon residents provide 19 hours or less per week and 3.6% of Wyke residents provide more than 50 hours per week.

91.1% of Bradford District residents do not provide any unpaid care, 3.9% provide 19 hours or less per week and 2.8% provided more than 50 hours per week

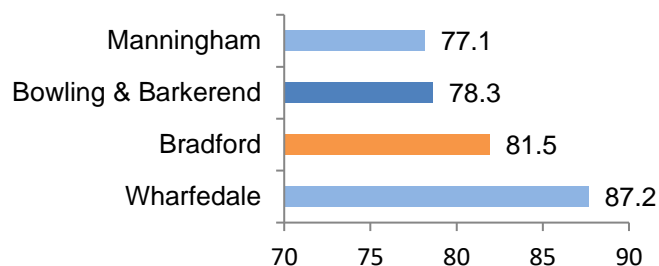
Life expectancy

In 2018-20 life expectancy at birth for both males and females living in Bowling & Barkerend was lower than the District average. Manningham ward had the lowest life expectancy rate for males and females. Wharfedale ward had the highest life expectancy rates for males and females.

Life expectancy - males

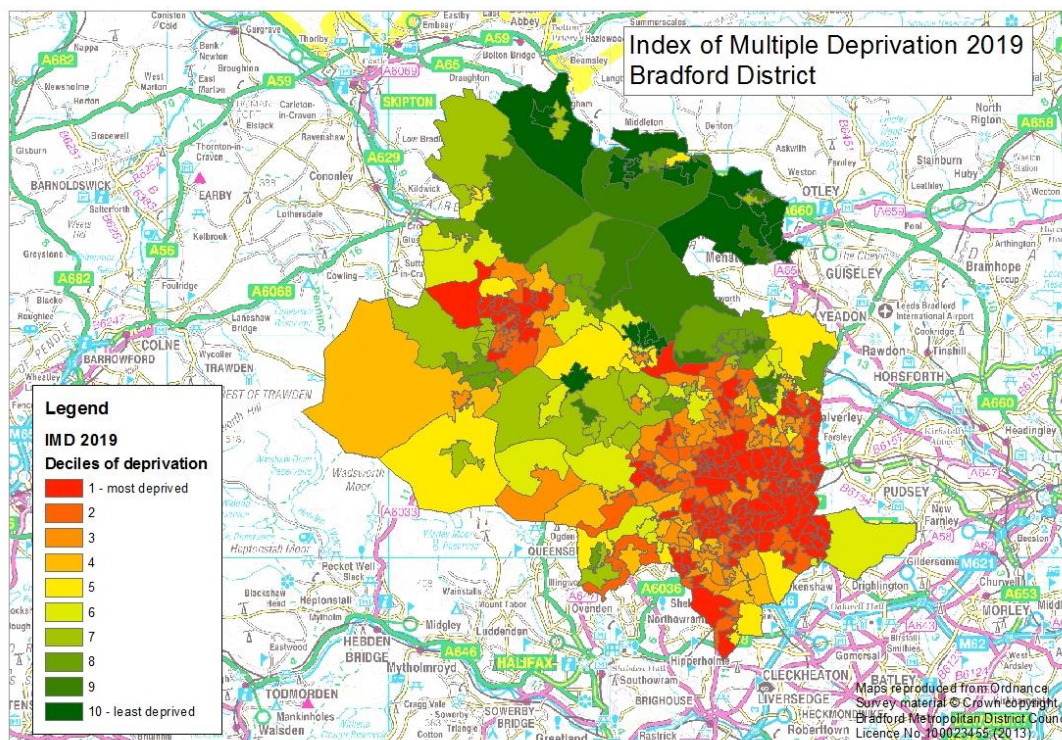


Life expectancy - females



Deprivation

The following map shows Lower Super Output Areas (LSOAs) ranked by deciles of deprivation. More deprived neighbourhoods are shown in red and less deprived neighbourhoods are shown in green.



The Indices of Deprivation 2019 were published in September 2019 at district and lower layer super output area. The indices are calculated using 39 separate indicators, organised across seven distinct domains of deprivation (income, employment, education skills and

training, health deprivation and disability, crime, barriers to housing and services and living environment) which are weighted and combined to calculate the Index of Multiple Deprivation 2019.

The results have now been aggregated to ward level and this shows that 14 of the District's wards are amongst the 10% most deprived wards in England and one ward is amongst the 10% least deprived wards in England. Manningham is consistently the most deprived ward for most of the indices and Wharfedale is consistently the least deprived ward for most of the indices.

Bowling & Barkerend is ranked 3rd of 30 wards in the District for the Index of Multiple Deprivation where 1 is the most deprived and 30 is the least deprived. Bowling & Barkerend is in 4th place for income deprivation and employment deprivation and 5th place for education, skills and training deprivation.

More about deprivation

The data about deprivation has been aggregated to ward level. Although this data provides a description of the District's wards, this description does not apply to every person who lives there. Many non-deprived people live in deprived areas, and many deprived people live in non-deprived areas.

Data sources and further information

Source: 2021 Census, Mid-year population estimates, Indices of Deprivation 2019

Link: www.ons.gov.uk www.nomisweb.co.uk

For more information about population and deprivation at ward level see:

<https://ubd.bradford.gov.uk/>

Contact: Catriona Colborn
Email: catriona.colborn@bradford.gov.uk
Office of the Chief Executive,
City of Bradford Metropolitan District Council,
2nd Floor Britannia House, Bradford BD1 1HX
ubd.bradford.gov.uk



Unless marked otherwise, you are free to use the content of this bulletin in your own work as long as you quote the source.

The wording in this publication can be made available in other formats such as large print.