

Life Course Statistics in Bradford District 2024

Life expectancy at birth

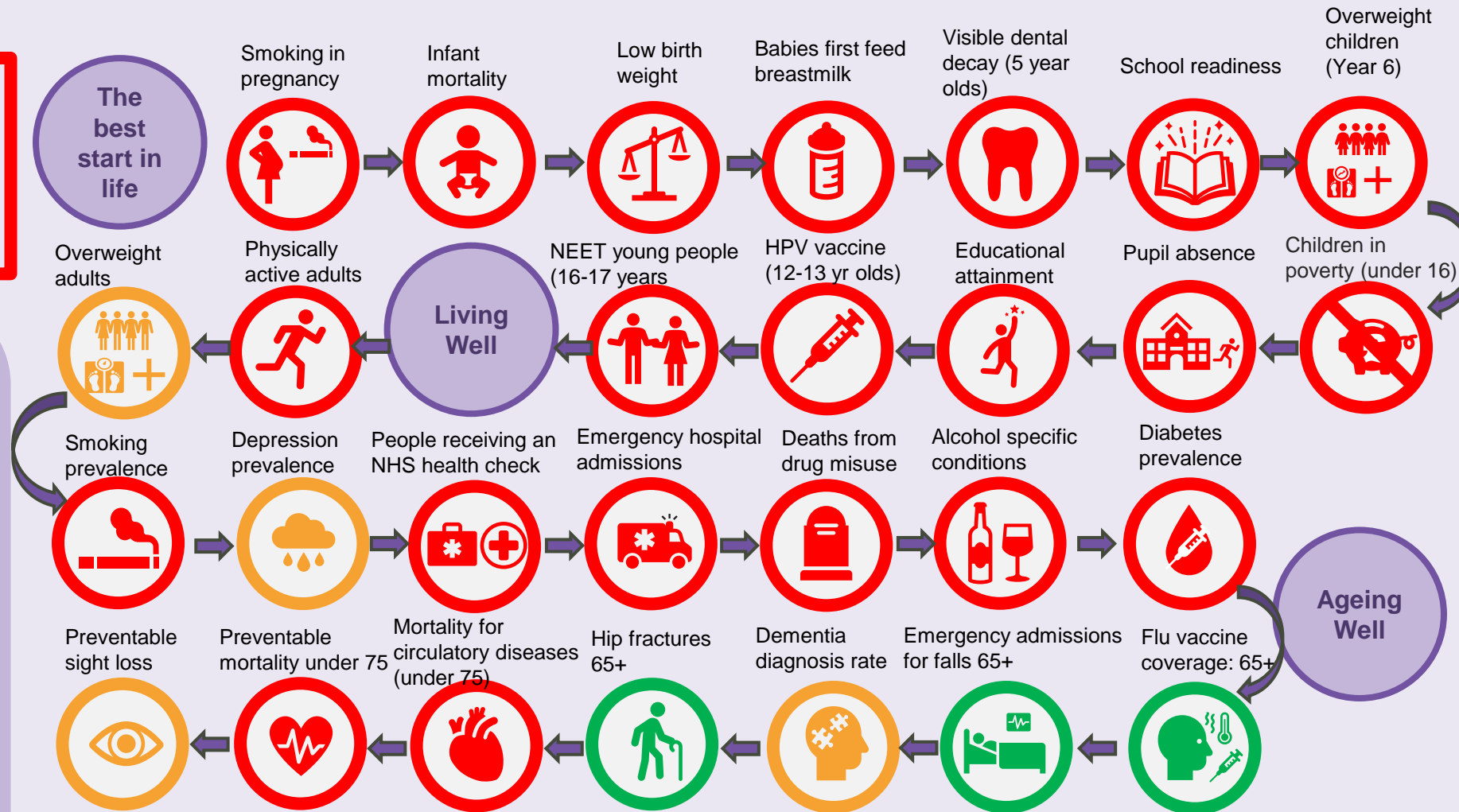
Males  **76.6 years**
Females  **81.1 years**

Population

In 2022, there were around **552,600** people living in Bradford District, which is an increase of 1% on the previous year's mid-year estimates. Bradford is the **5th largest Local Authority** in England in terms of population and has the **6th highest proportion** of under 18s in England with 25.5%. Around 50.9% of Bradford's population are female and 49.1% are male.

Wider Determinants

More than 3 in 10 children in Bradford District live in absolute low-income families (31.2%)
113 of every 10,000 children are in the care system in Bradford District.
Bradford has the **worst pupil absence rates** in England
Bradford has the **16th lowest employment rates** in England and the **10th highest unemployment rates**.



Key

- Worse than England** 
- Similar to England** 
- Better than England** 

Life expectancy at 65

Males  **17.1 years**
Females  **19.9 years**